



EPISTAR

CREE  
LEDs

BRIDGELUX  
The Magic of Light™

NICHIA

 sanan

LUMILEDS

Quality is job One

**CERTIFICATION of Conformity**  
 Registration No.: HTE2001060013  
**Applicant** : EN POWER ELECTRONICS LLC  
**Address** : Office#M01, Mezzanine Floor, Al Marri 7 building Besides Dewa Power Station, Manama Street 51 Ras Al Khor Industrial 1, P.o box: 126081, Dubai - UAE  
**Product** : Flexible led strip  
**Model No.** : See in Annex page 2 and page 3  
**Trademark** :

The submitted products have been tested by us with the listed standards and found in compliance with the following European Directives:  
**The EMC Directive 2014/53/EU**  
 EN 55015:2012+A1:2015, EN 61547:2009

The tests were performed in normal operation mode, the test results apply only to the particular sample tested and to the specific tests carried out. This certificate applies specifically to the sample investigated in our test reference number only.

The CE markings as shown below can be affixed on the product after preparation of necessary technical documentation.

Other relevant Directives have to be observed.

Certified By:   
 Manager  
 January 06, 2020

Shenzhen HONG Testing Technology Co., Ltd.  
 Address: 301, 30th Floor, Building 2, Lianhua Road, Hong Kong Street  
 Room 301, Shenzhen 518008 P.R.China  
 Email: hong@hong.com.cn www.hong.com.cn

International Service Cooperative Partner

**CERTIFICATE of Conformity**  
 Reference No. : LCS181018008E  
**Applicant** : Enpower Electronics LLC  
**Address** : Office# M01, Mezzanine Floor, Al Marri 7 building Besides Dewa Power Station, Manama Street 51 Ras Al Khor Industrial 1, P.O. Box: 126081, Dubai - UAE  
**Trademark** :

**Product** : LED LINEAR LIGHT/LED ALUMINUM PROFILE-LEDPRAY  
**Model(s)** : BR-PS-ALP07X, SEE ATTACHED  
**Parameters** : DC 24V 43.2W/8

The submitted products have been tested by us with the listed standards and found in compliance with the following European Directives:  
**The EMC Directive 2014/53/EU**  
 EN 55015:2012+A1:2015, EN 61547:2009

The tests were performed in normal operation mode. The test results apply only to the particular sample tested and to the specific tests carried out. This certificate applies specifically to the sample investigated in our test reference number only.

The CE markings as shown below can be affixed on the product after preparation of necessary technical documentation.

Other relevant Directives have to be observed.

Date of issue: October 29, 2018

Certified By:   
 Manager  
 January 06, 2020

Shenzhen HONG Testing Technology Co., Ltd.  
 Address: 301, 30th Floor, Building 2, Lianhua Road, Hong Kong Street, Room 301, Shenzhen 518008 P.R.China  
 Email: hong@hong.com.cn www.hong.com.cn

International Service Cooperative Partner

**CERTIFICATION of Conformity**  
 Registration No.: HTS2001060015  
**Applicant** : EN POWER ELECTRONICS LLC  
**Address** : Office#M01, Mezzanine Floor, Al Marri 7 building Besides Dewa Power Station, Manama Street 51 Ras Al Khor Industrial 1, P.o box: 126081, Dubai - UAE  
**Product** : Flexible led strip  
**Model No.** : See in Annex page 2 and page 3  
**Trademark** :

The submitted products have been tested by us with the listed standards and found in compliance with the following European Directives:  
**The Low Voltage Directive 2014/35/EU**  
 EN 60598-2-1:2015

The tests were performed in normal operation mode, the test results apply only to the particular sample tested and to the specific tests carried out. This certificate applies specifically to the sample investigated in our test reference number only.

The CE markings as shown below can be affixed on the product after preparation of necessary technical documentation.

Other relevant Directives have to be observed.

Certified By:   
 Manager  
 January 06, 2020

Shenzhen HONG Testing Technology Co., Ltd.  
 Address: 301, 30th Floor, Building 2, Lianhua Road, Hong Kong Street  
 Room 301, Shenzhen 518008 P.R.China  
 Email: hong@hong.com.cn www.hong.com.cn

International Service Cooperative Partner

**CERTIFICATION of Conformity**  
 Registration No.: HTFC001060014  
**Applicant** : EN POWER ELECTRONICS LLC  
**Address** : Office#M01, Mezzanine Floor, Al Marri 7 building Besides Dewa Power Station, Manama Street 51 Ras Al Khor Industrial 1, P.o box: 126081, Dubai - UAE  
**Product** : Flexible led strip  
**Model No.** : See in Annex page 2 and page 3  
**Trademark** :

The verification of RoHS Compliance has been granted to the applicant based on the review of test report on the sample of the above-mentioned product in accordance with the relevant provisions of EU RoHS Directive 2011/65/EU.

The results in this report are applicable only to the devices tested and/or test reports verified. This report shall not be reproduced except in full without the written approval of the undersigned. This report is valid only if accompanied with the RoHS report verified and specified by the undersigned.

The CE mark as shown below can be used under the responsibility of the manufacturer, after completion of an EU Declaration of Conformity and compliance with all relevant EU Directives.

(This certificate is only valid without the test report HTFC001060014)

Certified By:   
 Manager  
 January 06, 2020

Shenzhen HONG Testing Technology Co., Ltd.  
 Address: 301, 30th Floor, Building 2, Lianhua Road, Hong Kong Street  
 Room 301, Shenzhen 518008 P.R.China  
 Email: hong@hong.com.cn www.hong.com.cn

International Service Cooperative Partner

**CERTIFICATE of Conformity**  
 Reference No. : LCS181018009CR  
**Applicant** : Enpower Electronics LLC  
**Address** : Office# M01, Mezzanine Floor, Al Marri 7 building Besides Dewa Power Station, Manama Street 51 Ras Al Khor Industrial 1, P.O. Box: 126081, Dubai - UAE  
**Trademark** :

**Product** : LED LINEAR LIGHT/LED ALUMINUM PROFILE - LEDPRAY  
**Model(s)** : See the attached

The submitted products have been tested by us with the listed standards and found in compliance with the following European Directives:  
**The RoHS Directive 2011/65/EU**  
 IEC 62321-3-2013 IEC 62321-6-2013 IEC 62321-4-2013+AMD1:2017 CSV  
 IEC 62321-5-2015 IEC 62321-7-2015 IEC 62321-2-2017

The tests were performed in normal operation mode. The test results apply only to the particular sample tested and to the specific tests carried out. This certificate applies specifically to the sample investigated in our test reference number only.

The RoHS markings as shown below can be affixed on the product after preparation of necessary technical documentation.

Other relevant Directives have to be observed.

Date of issue: November 02, 2018

Certified By:   
 Manager  
 January 06, 2020

Shenzhen HONG Testing Technology Co., Ltd.  
 Address: 301, 30th Floor, Building 2, Lianhua Road, Hong Kong Street, Room 301, Shenzhen 518008 P.R.China  
 Email: hong@hong.com.cn www.hong.com.cn

International Service Cooperative Partner

# CONTENTS

LED STRIP FLEX

LED NEON FLEX

LED DOWN LIGHT

LED TRACK LIGHT

LED PENDANT LIGHT

LED LINEAR SPOT LIGHT

LED WALL WASHER

ALUMINUM PROFILE

# LED Strip Flex

BR-F3528xx60-xx-x-Fx-Vx

- ① ② ③ ④ ⑤ ⑥ ⑦ ⑧ ⑨

1

Brio - Series

Flexible

2

**LED Type**

SMD 2835 | SMD 3528  
SMD 5050

3

**Color**

WW: Warm white  
NW : Natural White  
CW : Cool White  
RGB : Red Green Blue

4

5

**LED Qty.per meter**

60 | 96 | 120 | 140  
180 | 210 | 240

6

**CCT - kelvin**

1800 K	2100 K	2300 K	2700 K	3000 K
	3500 K	4000 K	5000 K	6500 K
620nm		525nm		470nm

7

L : Low Lumens

C : Standard Lumens

P : Pro Version

8

**IP Index**

IP20 | IP54 | IP65  
IP66 | IP67 | IP68

9

**Input DC Voltage**

12 | 24 | 48 VDC

# Quality

## COVERLAY

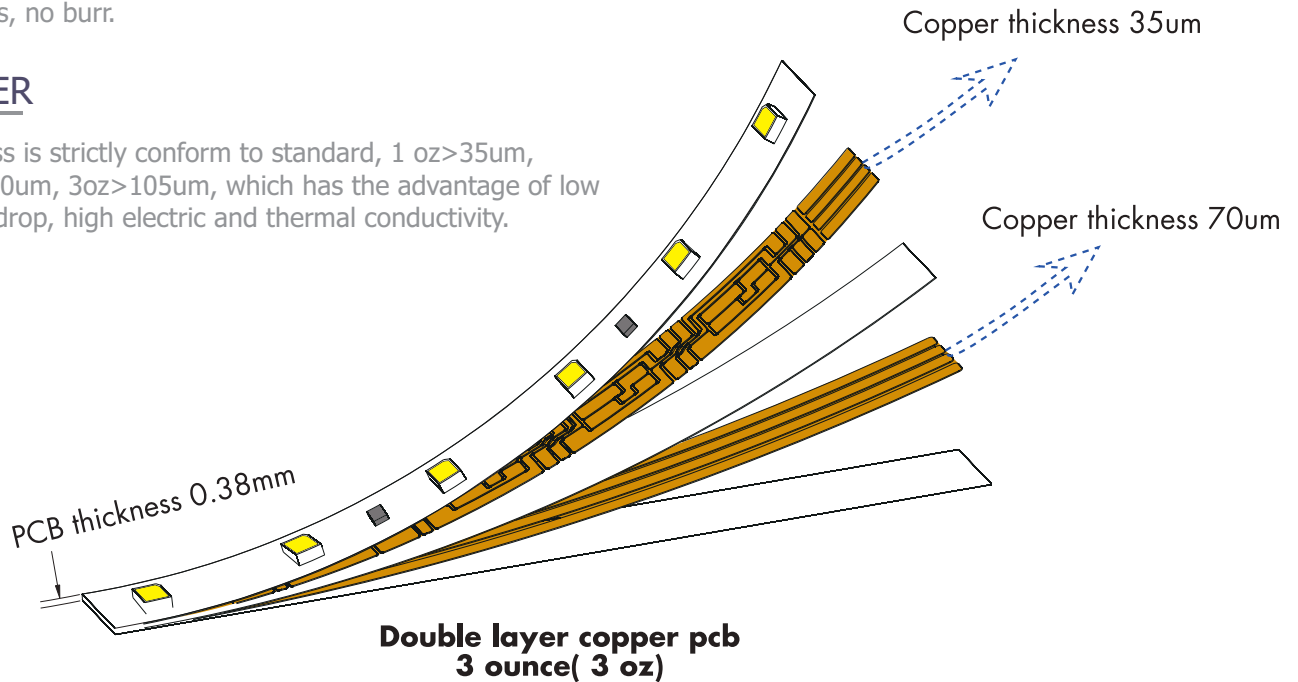
Both top and bottom layer are covered by PI film, which has a good protection for the copper layer, enhanced tension, high toughness and bending resistant.

## GUIDE HOLE

Copper thickness > 100um, electroplating process, uniform wall thickness, no burr.

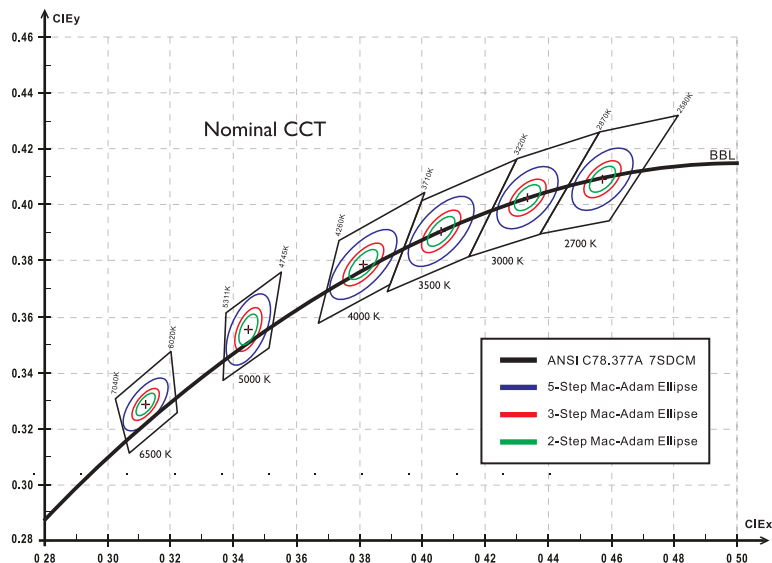
## COPPER

Thickness is strictly conform to standard, 1 oz > 35um, 2 oz > 70um, 3oz > 105um, which has the advantage of low voltage drop, high electric and thermal conductivity.



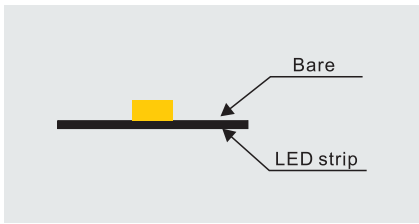
## Excellent Color Consistency

SIGNLE Binning

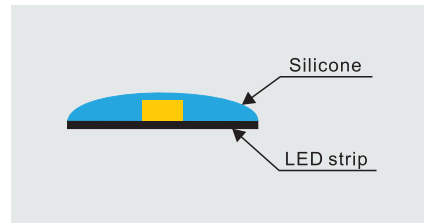


# IP Grade

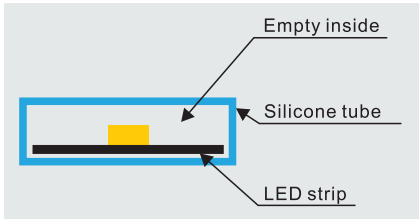
## IP20 (Non-waterproof)



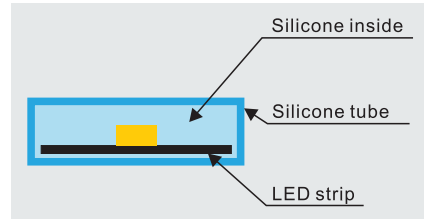
## IP52/ IP65 (Silicon glue)



## IP66/ IP67 (Silicone tube)



## IP68 (Silicone filling)

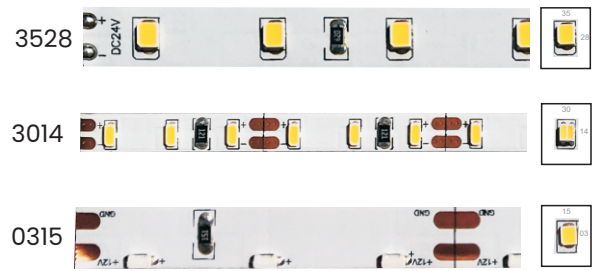
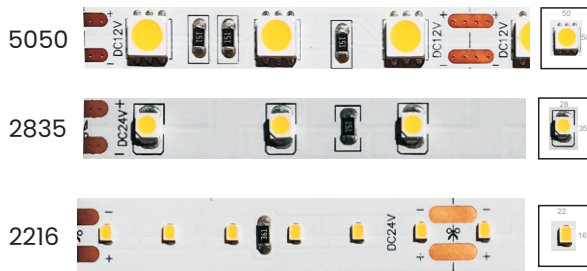


IP 20 : Bare. max. light output and the best color consistency indoor use.

IP 52 : Glue dropping process for, damp/moist environment application

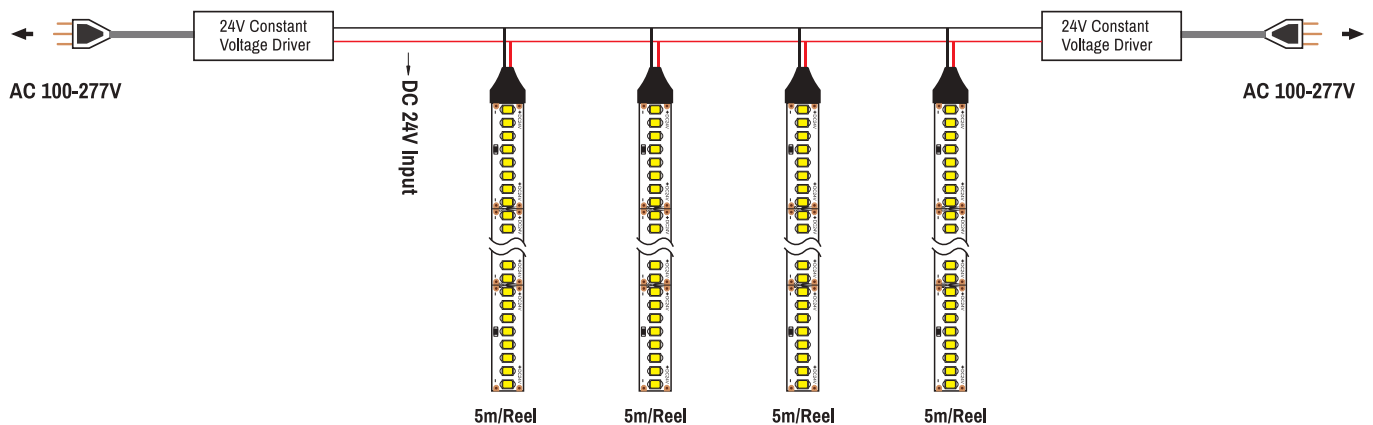
IP66/67 : Silicon tube / Silicon filling for out door use

IP 68 : Solid silicon extrusion / polyurethane for out door or near water application



## Wiring diagram application :

Single end power input for 5 meters



## BR-F3528xx60-xx-x-Fx-Vx

2700K - 6500K



DC 12/24/48V **3** SDCM **5** years warranty



Specifications : 4.8W/M, 60Leds/M, 8-10mm

Model	CCT	Flux (LM/M)	Efficacy
BR-F3528WW60-20-C-Fx-Vx	2000K	329	69
BR-F3528WW60-24-C-Fx-Vx	2400K	349	73
BR-F3528WW60-27-C-Fx-Vx	2700K	379	79
BR-F3528WW60-30-C-Fx-Vx	3000K	399	83
BR-F3528NW60-40-C-Fx-Vx	4000K	409	85
BR-F3528CW60-55-C-Fx-Vx	5500K	429	89
BR-F3528CW60-65-C-Fx-Vx	6500K	429	89
BR-F3528R60-C-Fx-Vx	620-630NM	1BIN =3NM	
BR-F3528G60-C-Fx-Vx	520-530 NM	1BIN =3NM	
BR-F3528B60-C-Fx-Vx	460-470NM	1BIN =3NM	

## BR-F3528xx120-xx-x-Fx-Vx

2700K - 6500K



DC 12/24/48V **3** SDCM **5** years warranty



Specifications : 9.6W/M, 120Led/M, 8-10mm

Model	CCT	Flux (LM/M)	Efficacy
BR-F3528WW120-20-C-Fx-Vx	2000K	638	67
BR-F3528WW120-24-C-Fx-Vx	2400K	678	71
BR-F3528WW120-27-C-Fx-Vx	2700K	768	80
BR-F3528WW120-30-C-Fx-Vx	3000K	798	83
BR-F3528NW120-40-C-Fx-Vx	4000K	838	87
BR-F3528CW120-55-C-Fx-Vx	5500K	878	91
BR-F3528CW120-65-C-Fx-Vx	6500K	878	91
BR-F3528R120-C-Fx-Vx	620-630NM	1BIN =3NM	
BR-F3528G120-C-Fx-Vx	520-530NM	1BIN =3NM	
BR-F3528B120-C-Fx-Vx	460-470NM	1BIN =3NM	



## BR-F3528xx180-xx-x-Fx-Vx

2700K - 6500K



DC 12/24/48V **3** SDCM **5** years warranty



Specifications : 14.4W/M, 180Led/M, 8-10mm

Model	CCT	Flux (LM/M)	Efficacy
BR-F3528WW180-20-C-Fx-Vx	2000K	1017	71
BR-F3528WW180-24-C-Fx-Vx	2400K	1117	78
BR-F3528WW180-27-C-Fx-Vx	2700K	1117	82
BR-F3528WW180-30-C-Fx-Vx	3000K	1257	87
BR-F3528NW180-40-C-Fx-Vx	4000K	1317	91
BR-F3528CW180-55-C-Fx-Vx	5500K	1377	96
BR-F3528CW180-65-C-Fx-Vx	6500K	1377	96
BR-F3528R180-C-Fx-Vx	620-630NM	1BIN = 3NM	
BR-F3528G180-C-Fx-Vx	520-530NM	1BIN = 3NM	
BR-F3528B180-C-Fx-Vx	460-470NM	1BIN = 3NM	

## BR-F3528xx240-xx-x-Fx-Vx

2700K - 6500K



DC 12/24/48V **3** SDCM **5** years warranty



Specifications : 19.2W/M, 240Led/M, 8-10mm

Model	CCT	Flux (LM/M)	Efficacy
BR-F3528WW240-20-C-Fx-Vx	2000K	1297	68
BR-F3528WW240-24-C-Fx-Vx	2400K	1416	74
BR-F3528WW240-27-C-Fx-Vx	2700K	1496	78
BR-F3528WW240-30-C-Fx-Vx	3000K	1546	81
BR-F3528NW240-40-C-Fx-Vx	4000K	1626	85
BR-F3528CW240-55-C-Fx-Vx	5500K	1716	89
BR-F3528CW240-65-C-Fx-Vx	6500K	1716	89
BR-F3528R240-C-Fx-Vx	620-630NM	1BIN = 3NM	
BR-F3528G240-C-Fx-Vx	520-530NM	1BIN = 3NM	
BR-F3528B240-C-Fx-Vx	460-470NM	1BIN = 3NM	

## BR-F2835xx60-xx-x-Fx-Vx

2835 Low Density

2700K - 6500K

**DC** 12/24/48V **3** SDCM **5** years warranty



Specifications : **4.8W/M, 60Led/M, 8-10mm**

Model	CCT	Flux (LM/M)	Efficacy
BR-F2835WW60-20-L-Fx-Vx	2000K	345	72
BR-F2835WW60-24-L-Fx-Vx	2400K	366	76
BR-F2835WW60-27-L-Fx-Vx	2700K	397	82
BR-F2835WW60-30-L-Fx-Vx	3000K	418	87
BR-F2835NW60-40-L-Fx-Vx	4000K	429	89
BR-F2835CW60-55-L-Fx-Vx	5500K	450	93
BR-F2835CW60-65-L-Fx-Vx	6500K	450	93

## BR-F2835xx120-xx-x-Fx-Vx

2700K - 6500K

**DC** 12/24/48V **3** SDCM **5** years warranty



Specifications : **9.6W/M, 120Leds/M, 8-10mm**

Model	CCT	Flux (LM/M)	Efficacy
BR-F2835WW120-20-L-Fx-Vx	2000K	669	70
BR-F2835WW120-24-L-Fx-Vx	2400K	711	74
BR-F2835WW120-27-L-Fx-Vx	2700K	806	83
BR-F2835WW120-30-L-Fx-Vx	3000K	837	87
BR-F2835NW120-40-L-Fx-Vx	4000K	879	91
BR-F2835CW120-55-L-Fx-Vx	5500K	921	95
BR-F2835CW120-65-L-Fx-Vx	6500K	921	95

## BR-F2835xx180-xx-x-Fx-Vx

2700K - 6500K

**DC** 12/24/48V **3** SDCM **5** years warranty



Specifications : 14.4W/M, 180Led/M, 8-10mm

Model	CCT	Flux (LM/M)	Efficacy
BR-F2835WW180-20-L-Fx-Vx	2000K	1067	73
BR-F2835WW180-24-L-Fx-Vx	2400K	1172	81
BR-F2835WW180-27-L-Fx-Vx	2700K	1172	81
BR-F2835WW180-30-L-Fx-Vx	3000K	1319	91
BR-F2835NW180-40-L-Fx-Vx	4000K	1382	96
BR-F2835CW180-55-L-Fx-Vx	5500K	1445	97
BR-F2835CW180-65-L-Fx-Vx	6500K	1445	97

## BR-F2835xx240-xx-x-Fx-Vx

2700K - 6500K

**DC** 12/24/48V **3** SDCM **5** years warranty



Specifications : 19.2W/M, 240Led/M, 8-10mm

Model	CCT	Flux (LM/M)	Efficacy
BR-F2835WW240-20-L-Fx-Vx	2000K	1361	71
BR-F2835WW240-24-L-Fx-Vx	2400K	1486	77
BR-F2835WW240-27-L-Fx-Vx	2700K	1570	81
BR-F2835WW240-30-L-Fx-Vx	3000K	1623	84
BR-F2835NW240-40-L-Fx-Vx	4000K	1707	89
BR-F2835CW240-55-L-Fx-Vx	5500K	1801	94
BR-F2835CW240-65-L-Fx-Vx	6500K	1801	94

2700K - 6500K

DC 12/24/48V 3 SDCM 5 years warranty



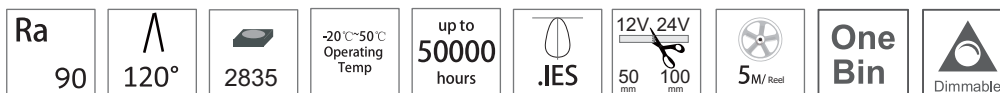
Specifications : 7.2W/M, 30Led/M, 10-12mm

Model	CCT	Flux (LM/M)	Efficacy
BR-F2835WW30-20-P-Fx-Vx	2000K	578	80
BR-F2835WW30-24-P-Fx-Vx	2400K	630	88
BR-F2835WW30-27-P-Fx-Vx	2700K	693	96
BR-F2835WW30-30-P-Fx-Vx	3000K	714	99
BR-F2835NW30-40-P-Fx-Vx	4000K	725	101
BR-F2835CW30-55-P-Fx-Vx	5500K	735	102
BR-F2835CW30-65-P-Fx-Vx	6500K	735	102

## BR-F2835xx60-xx-x-Fx-Vx

2700K - 6500K

DC 12/24/48V 3 SDCM 5 years warranty



Specifications : 14.4W/M, 60Led/M, 10-12mm

Model	CCT	Flux (LM/M)	Efficacy
BR-F2835WW60-20-P-Fx-Vx	2000K	1050	73
BR-F2835WW60-24-P-Fx-Vx	2400K	1113	77
BR-F2835WW60-27-P-Fx-Vx	2700K	1239	86
BR-F2835WW60-30-P-Fx-Vx	3000K	1271	88
BR-F2835NW60-40-P-Fx-Vx	4000K	1365	95
BR-F2835CW60-55-P-Fx-Vx	5500K	1386	96
BR-F2835CW60-65-P-Fx-Vx	6500K	1386	96

## BR-F2835xx96-xx-x-Fx-Vx

2700K - 6500K

**DC** 12/24/48V **3** SDCM **5** years warranty



Specifications : **21W/M, 96Led/M, 10-12mm**

Model	CCT	Flux (LM/M)	Efficacy
BR-F2835WW96-20-P-Fx-Vx	2000K	1531	73
BR-F2835WW96-24-P-Fx-Vx	2400K	1623	77
BR-F2835WW96-27-P-Fx-Vx	2700K	1807	86
BR-F2835WW96-30-P-Fx-Vx	3000K	1853	88
BR-F2835NW96-40-P-Fx-Vx	4000K	1991	95
BR-F2835CW96-55-P-Fx-Vx	5500K	2021	96
BR-F2835CW96-65-P-Fx-Vx	6500K	2021	96

## BR-F2835xx120-xx-x-Fx-Vx

2700K - 6500K

**DC** 12/24/48V **3** SDCM **5** years warranty



Specifications : **28.8W/M, 120Leds/M, 10-12mm**

Model	CCT	Flux (LM/M)	Efficacy
BR-F2835WW120-20-P-Fx-Vx	2000K	2163	75
BR-F2835WW120-24-P-Fx-Vx	2400K	2293	80
BR-F2835WW120-27-P-Fx-Vx	2700K	2552	89
BR-F2835WW120-30-P-Fx-Vx	3000K	2617	91
BR-F2835NW120-40-P-Fx-Vx	4000K	2812	98
BR-F2835CW120-55-P-Fx-Vx	5500K	2855	99
BR-F2835CW120-65-P-Fx-Vx	6500K	2855	99

## BR-F2835xx180-xx-x-Fx-Vx

2700K - 6500K

**DC** 12/24/48V **3** SDCM **5** years warranty



Specifications : **33.6W/M, 180Led/M, 10-12mm**

Model	CCT	Flux (LM/M)	Efficacy
BR-F2835WW180-20-P-Fx-Vx	2000K	2854	75
BR-F2835WW180-24-P-Fx-Vx	2400K	3025	80
BR-F2835WW180-27-P-Fx-Vx	2700K	3368	89
BR-F2835WW180-30-P-Fx-Vx	3000K	3453	91
BR-F2835NW180-40-P-Fx-Vx	4000K	3710	98
BR-F2835CW180-55-P-Fx-Vx	5500K	3767	99
BR-F2835CW180-65-P-Fx-Vx	6500K	3767	99

## BR-F2835xx240-xx-x-Fx-Vx

2700K - 6500K

**DC** 12/24/48V **3** SDCM **5** years warranty



Specifications : **48W/M, 240Led/M, 10-12mm**

Model	CCT	Flux (LM/M)	Efficacy
BR-F2835WW240-20-P-Fx-Vx	2000K	2854	75
BR-F2835WW240-24-P-Fx-Vx	2400K	3025	80
BR-F2835WW240-27-P-Fx-Vx	2700K	3368	89
BR-F2835WW240-30-P-Fx-Vx	3000K	3453	91
BR-F2835NW240-40-P-Fx-Vx	4000K	3710	98
BR-F2835CW240-55-P-Fx-Vx	5500K	3767	99
BR-F2835CW240-65-P-Fx-Vx	6500K	3767	99

2700K - 6500K

DC 12/24/48V 3 SDCM 5 years warranty



Specifications : 4.8W/M, 120Leds/M, 5mm

Model	CCT	Flux (LM/M)	Efficacy
BR-F2216WW120-20-C-Fx-Vx	2000K	315	66
BR-F2216WW120-24-C-Fx-Vx	2400K	336	70
BR-F2216WW120-27-C-Fx-Vx	2700K	357	74
BR-F2216WW120-30-C-Fx-Vx	3000K	378	79
BR-F2216NW120-40-C-Fx-Vx	4000K	406	85
BR-F2216CW120-55-C-Fx-Vx	5500K	420	88
BR-F2216CW120-65-C-Fx-Vx	6500K	420	88

## BR-F3014xx70-xx-x-Fx-Vx

2700K - 6500K

DC 12/24/48V 3 SDCM 5 years warranty



Specifications : 1.5W/M, 70Leds/M, 8-10mm

Model	CCT	Flux (LM/M)	Efficacy
BR-F3014WW70-27-C-Fx-Vx	2700K	142	94
BR-F3014WW70-30-C-Fx-Vx	3000K	145	96
BR-F3014NW70-40-C-Fx-Vx	4000K	147	98
BR-F3014CW70-60-C-Fx-Vx	6500K	150	100

## BR-F5050xx30-xx-x-Fx-Vx

2700K - 6500K



DC 12/24/48V **3** SDCM **5** years warranty



Specifications : 7.2W/M, 30Leds/M, 10-12mm

Model	CCT	Flux (LM/M)	Efficacy
BR-F5050WW30-20-C-Fx-Vx	2000K	483	67
BR-F5050WW30-24-C-Fx-Vx	2400K	567	79
BR-F5050WW30-27-C-Fx-Vx	2700K	651	90
BR-F5050WW30-30-C-Fx-Vx	3000K	662	92
BR-F5050NW30-40-C-Fx-Vx	4000K	683	95
BR-F5050CW30-55-C-Fx-Vx	5500K	693	96
BR-F5050CW30-65-C-Fx-Vx	6500K	693	96
BR-F5050R30-C-Fx-Vx	620-630NM	1BIN = 3NM	
BR-F5050G30-C-Fx-Vx	520-530NM	1BIN = 3NM	
BR-F5050B30-C-Fx-Vx	460-470NM	1BIN = 3NM	

## BR-F5050xx60-xx-x-Fx-Vx

2700K - 6500K



DC 12/24/48V **3** SDCM **5** years warranty



Specifications : 14.4W/M, 60Leds/M, 10-12mm

Model	CCT	Flux (LM/M)	Efficacy
BR-F5050WW60-20-C-Fx-Vx	2000K	977	68
BR-F5050WW60-24-C-Fx-Vx	2400K	1134	79
BR-F5050WW60-27-C-Fx-Vx	2700K	1323	92
BR-F5050WW60-30-C-Fx-Vx	3000K	1344	93
BR-F5050NW60-40-C-Fx-Vx	4000K	1365	95
BR-F5050CW60-55-C-Fx-Vx	5500K	1386	96
BR-F5050CW60-65-C-Fx-Vx	6500K	1386	96
BR-F5050R60-C-Fx-Vx	620-630NM	1BIN = 3NM	
BR-F5050G60-C-Fx-Vx	520-530NM	1BIN = 3NM	
BR-F5050B60-C-Fx-Vx	460-470NM	1BIN = 3NM	



2700K - 6500K

DC<sub>12/24/48V</sub> 3 SDCM 5 years warranty

Specifications : 5W/M, 60Leds/M, 5-8mm

Model	CCT	Flux (LM/M)	Efficacy
BR-F2835WW60-27-S-Fx-Vx	2700K	390	78
BR-F2835WW60-30-S-Fx-Vx	3000K	400	80
BR-F2835NW60-40-S-Fx-Vx	4000K	450	90
BR-F2835CW60-60-S-Fx-Vx	6000K	480	96

## BR-F2835xx112-xx-x-Fx-Vx

2700K - 6500K

DC<sub>12/24/48V</sub> 3 SDCM 5 years warranty

Specifications : 9.6W/M, 112Leds/M, 8-10mm

Model	CCT	Flux (LM/M)	Efficacy
BR-F2835WW112-20-C-Fx-Vx	2000K	1100	115
BR-F2835WW112-24-C-Fx-Vx	2400K	1100	115
BR-F2835WW112-27-C-Fx-Vx	2700K	1130	118
BR-F2835WW112-30-C-Fx-Vx	3000K	1130	118
BR-F2835NW112-40-C-Fx-Vx	4000K	1180	123
BR-F2835CW112-55-C-Fx-Vx	5500K	1230	128
BR-F2835CW112-65-C-Fx-Vx	6500K	1280	133

# BR-F5050xx120D-xx-x-Fx-Vx

# Double Row

2700K - 6500K

**DC** 12/24/48V **3** SDCM **5** years warranty

Ra 90	$\Lambda$ 120°	 5050	-20°C~50°C Operating Temp	up to <b>50000</b> hours	 .IES	12V 24V  50 mm 100 mm	 5M/Reel	<b>One Bin</b>	 Dimmable
----------	-------------------	----------	---------------------------------	--------------------------------	----------	-----------------------------	-------------	--------------------	--------------

Specifications : **28.8W/M, 120Leds/M, 20mm**

Model	CCT	Flux (LM/M)	Efficacy
BR-F5050WW120D-20-C-Fx-Vx	2000K	2012	70
BR-F5050WW120D-24-C-Fx-Vx	2400K	2336	81
BR-F5050WW120D-27-C-Fx-Vx	2700K	2725	95
BR-F5050WW120D-30-C-Fx-Vx	3000K	2769	96
BR-F5050NW120D-40-C-Fx-Vx	4000K	2812	98
BR-F5050CW120D-55-C-Fx-Vx	5500K	2855	99
BR-F5050CW120D-65-C-Fx-Vx	6500K	2855	99

# BR-F3528xx240D-xx-x-Fx-Vx

# Double Row

2700K - 6500K

**DC** 12/24/48V **3** SDCM **5** years warranty

Ra 90	$\Lambda$ 120°	 3528	-20°C~50°C Operating Temp	up to <b>50000</b> hours	 .IES	12V 24V  25 mm 50 mm	 5M/Reel	<b>One Bin</b>	 Dimmable
----------	-------------------	----------	---------------------------------	--------------------------------	----------	----------------------------	-------------	--------------------	--------------

Specifications : **19.2W/M, 240Leds/M, 20mm**

Model	CCT	Flux (LM/M)	Efficacy
BR-3528WW240D-20-C-Fx-Vx	2000K	1297	68
BR-F3528WW240D-24-C-Fx-Vx	2400K	1416	74
BR-F3528WW240D-27-C-Fx-Vx	2700K	1496	78
BR-F3528WW240D-30-C-Fx-Vx	3000K	1546	81
BR-F3528NW240D-40-C-Fx-Vx	4000K	1626	85
BR-F3528CW240D-55-C-Fx-Vx	5500K	1716	89
BR-F3528CW240D-65-C-Fx-Vx	6500K	1716	89

2700K - 6500K

DC 12/24

3 SDCM 5 years warranty

Ra  
90

120°

315

-20°C~50°C  
Operating  
Tempup to  
50000  
hours

.IES

100  
mm

5M/ Reel

One  
Bin

Dimmable

Specifications : 4.8W/M, 60Leds/M, 8mm

Model	CCT	Flux (LM/M)	Efficacy
BR-F315WW60-27-C-Fx-Vx	2000K	430	90
BR-F315WW60-30-C-Fx-Vx	3000K	430	90
BR-F315NW60-40-C-Fx-Vx	4000K	500	104
BR-F315CW60-50-C-Fx-Vx	5000K	520	108
BR-F315CW60-65-C-Fx-Vx	6000K	540	112

2700K - 6500K

DC 12/24

3 SDCM 5 years warranty

Ra  
90

120°

315

-20°C~50°C  
Operating  
Tempup to  
50000  
hours

.IES

62.5  
mm

5M/ Reel

One  
Bin

Dimmable

Specifications : 7.2W/M, 96Leds/M, 10mm

Model	CCT	Flux (LM/M)	Efficacy
BR-F315WW96-27-C-Fx-Vx	2700K	620	86
BR-F315WW96-30-C-Fx-Vx	3000K	620	86
BR-F315NW96-40-C-Fx-Vx	4000K	650	90
BR-F315CW96-50-C-Fx-Vx	5000K	650	90
BR-F315CW96-65-C-Fx-Vx	6000K	680	95



**DC** 12/24/48V **3** SDCM **5** years warranty



Specifications : 14.4W/M, 60Led/M, 10-12mm

Model	CCT	Flux (LM/M)	Efficacy
BR-F5050RGB60-x-Fx-Vx	RGB	530	



**DC** 12/24/48V **3** SDCM **5** years warranty



Specifications : 23W/M, 96Led/M, 10-12mm

Model	CCT	Flux (LM/M)	Efficacy
BR-F5050RGB96-x-Fx-Vx	RGB	780	

# BR-F5050RGBW60-x-Fx-Vx

RGBW

2700K - 6500K



DC 12/24/48V **3** SDCM **5** years warranty

Ra 90	120°	5050	-20°C~50°C Operating Temp	up to 50000 hours	.IES	12V 24V 50 mm 100 mm	5M/Reel	One Bin	Dimmable
----------	------	------	---------------------------------	-------------------------	------	-------------------------	---------	------------	----------

Specifications : 19.2W/M, 60Led/M, 10-12mm

Model	CCT	Flux (LM/M)	Efficacy
BR-F5050RGBW60-27-Fx-Vx	2700K	330	
BR-F5050RGBW60-30-Fx-Vx	3000K	347	
BR-F5050RGBW60-40-Fx-Vx	4000K	357	
BR-F5050RGBW60-65-Fx-Vx	6500K	378	

# BR-F5050RGB96-x-Fx-Vx

RGBW

2700K - 6500K



DC 12/24/48V **3** SDCM **5** years warranty

Ra 90	120°	5050	-20°C~50°C Operating Temp	up to 50000 hours	.IES	12V 24V 50 mm 100 mm	5M/Reel	One Bin	Dimmable
----------	------	------	---------------------------------	-------------------------	------	-------------------------	---------	------------	----------

Specifications : 23W/M, 96Led/M, 10-12mm

Model	CCT	Flux (LM/M)	Efficacy
BR-F5050RGBW96-27-Fx-Vx	2700K	464	
BR-F5050RGBW96-30-Fx-Vx	3000K	480	
BR-F5050RGBW96-40-Fx-Vx	4000K	510	
BR-F5050RGBW96-65-Fx-Vx	6500K	560	

# BR-F5050CCTW60-x-Fx-Vx

## Tunable Strip

2700K - 6500K

**DC** 12/24/48V **3** SDCM **5** years warranty

Ra 90	120°	5050	-20°C~50°C Operating Temp	up to 50000 hours	.IES	12V 24V 50 mm 100 mm	5M/Reel	One Bin	Dimmable
----------	------	------	---------------------------------	-------------------------	------	-------------------------	---------	------------	----------

Specifications : 14.4W/M, 60Led/M, 10-12mm

Model	CCT	Flux (LM/M)	Efficacy
BR-F5050CCT60-x-Fx-Vx	2700K	640	
	6000K	740	

# BR-F2835TW120-x-Fx-Vx

## Tunable Strip

2700K - 6500K

**DC** 12/24/48V **3** SDCM **5** years warranty

Ra 90	120°	2835	-20°C~50°C Operating Temp	up to 50000 hours	.IES	12V 24V 50 mm 100 mm	5M/Reel	One Bin	Dimmable
----------	------	------	---------------------------------	-------------------------	------	-------------------------	---------	------------	----------

Specifications : 19.2W/M, 120Led/M, 10-12mm

Model	CCT	Flux (LM/M)	Efficacy
BR-F2835TW120-x-Fx-Vx	2700K	1020	
	6000K	1040	

2700K - 6500K

DC 12/24/48V 3 SDCM 5 years warranty

Ra  
90

120°

Width  
4mm, 8mm,  
10mm-20°C-50°C  
Operating  
Tempup to  
50000  
hours

.IES

12V 24V  
25 mm 50 mm

5M/ Reel

One  
Bin

Dimmable

Specifications : 5 W/M, 480 Leds/M

Model	CCT	Flux (LM/M)	Efficacy
BR-FCOB480-27-L-F-VX	2700K	480	96
BR-FCOB480-30-L-F-VX	3000K	515	103
BR-FCOB480-40-L-F-VX	4000K	575	115
BR-FCOB480-65-L-F-VX	6500K	560	112

2700K - 6500K



DC 12/24/48V 3 SDCM 5 years warranty

Ra  
90

120°

Width  
10mm, 8mm-20°C-50°C  
Operating  
Tempup to  
50000  
hours

.IES

12V 24V  
50 mm 100 mm

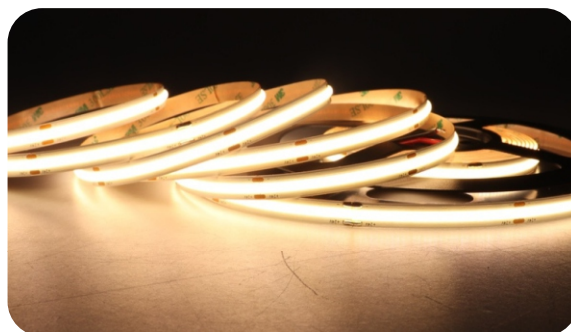
5M/ Reel

One  
Bin

Dimmable

Specifications : 10W/M, 480Leds/M

Model	CCT	Flux (LM/M)	Efficacy
BR-FCOB480-27-C-F-VX	2700K	960	96
BR-FCOB480-30-C-F-VX	3000K	1030	103
BR-FCOB480-40-C-F-VX	4000K	1150	115
BR-FCOB480-65-C-F-VX	6500K	1120	112



2700K - 6500K

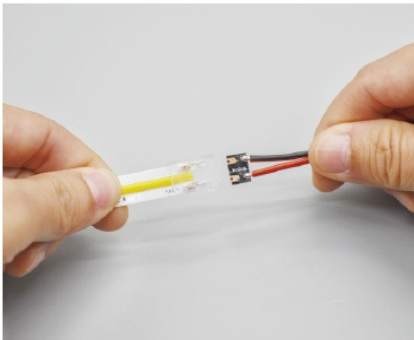
DC 12/24/48V 3 SDCM 5 years warranty



Specifications : 16W/M, 480 Leds/M

Model	CCT	Flux (LM/M)	Efficacy
BR-FCOB480-27-P-F-VX	2700K	1536	96
BR-FCOB480-30-P-F-VX	3000K	1648	103
BR-FCOB480-40-P-F-VX	4000K	1840	115
BR-FCOB480-65-P-F-VX	6500K	1792	112

## Transparent Solder-free Connector for COB led strip



Insert one end of led strip and wire connector into both ends of the connection terminal respectively to ensure that the metal clips is on the same side as the metal solder pad of led strip



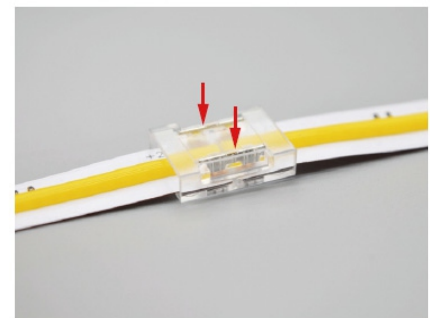
Meanwhile make sure both ends are closely connected, Press the metal clip down with the appropriate force using pliers to ensure that the metal clip is inserted into the appropriate position, and connection completed.



Insert each ends of led strips into the end of the connection terminal respectively, make sure the metal clip is on the same side as the metal solder pad of led strip



After complete the insert, also make sure both ends of led strip are tightly connected



Press the metal clip down with the appropriate force using pliers to ensure that the metal clip is inserted into the appropriate position, and connection completed.

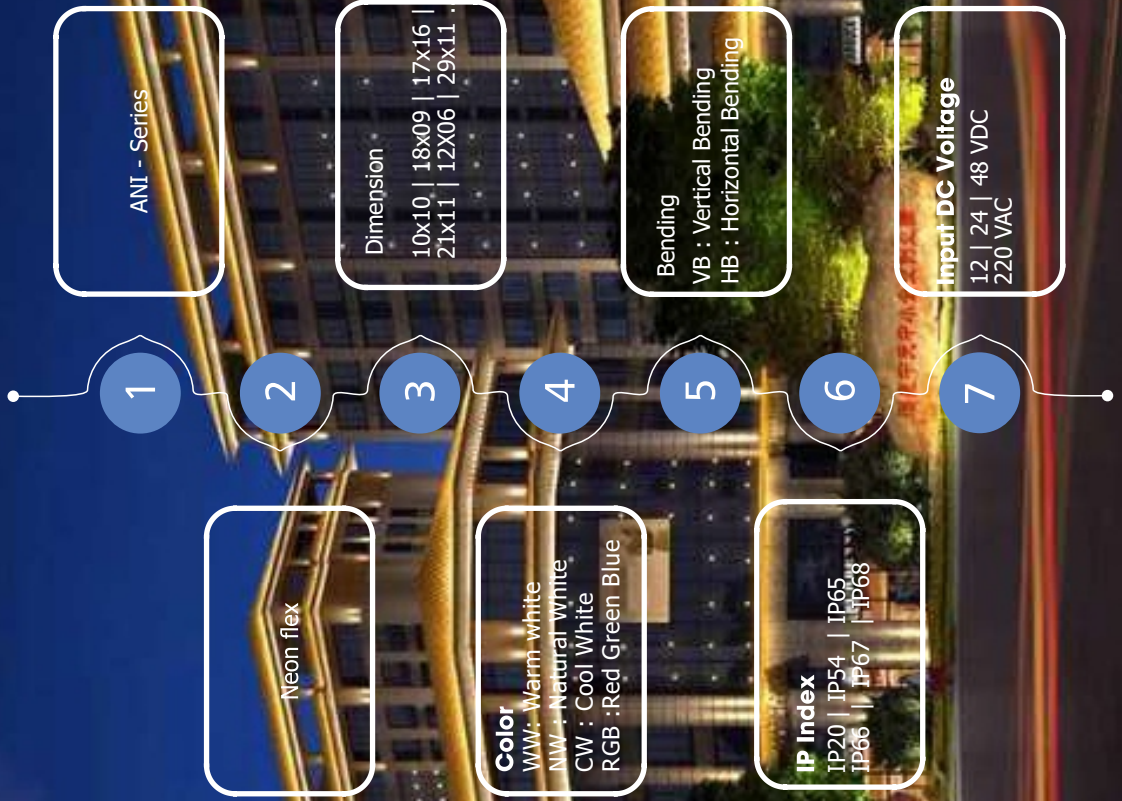


# LED Neon Flex ■■■



# AN-F1716xx-xx-Fx-Vx

- ① ② ③ ④ ⑤ ⑥ ⑦



# AN-F1716Wxx-CV-Fx

AN-F1716 is Ledray's premium LED Neon with both Horizontal Bending and Vertical Bending optional in the same dimension. It is the highest lumen output LED Neon in our product range, and it can be up to 900lm per meter, also built-in constant current circuit board keeps even illumination without voltage drop. Available in single color, RGB, pixel addressable, dynamic white and RGBW.

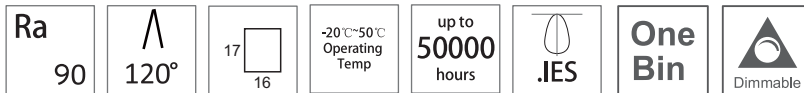
## Features

- Available in PVC and silicon version
- Black Colored Finish also available
- High IP protection (IP68)
- Rated power/M: 12W : WW/NW/CW/ RGB, 15W : RGBW,
- 165W : Pixel RGB, 22W : Pixel RGBW
- Cutting Length : 55.6mm/83.3mm
- Continuous Length :5m/ 7m/10m/15m(Single-end power feeding)



2000K - 6500K

**DC** 12/24/48V **3** SDCM **5** years warranty



## Specifications :

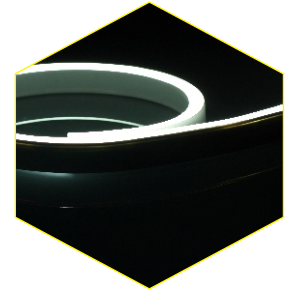
Model	Power (W)	CCT	Flux (LM/M)	Efficacy	
AN-F1716W22-CV-Fx	15	2200K	700	47	
AN-F1716W27-CV-Fx	15	2700K	800	54	Ip20
AN-F1716W30-CV-Fx	15	3000K	800	54	IP67
AN-F1716W40-CV-Fx	15	4000K	900	60	IP68
AN-F1716W57-CV-Fx	15	5700K	850	56	
AN-F1716RGBW-CV-Fx	15	RGB	300		

# AN-F2111Wxx-CV-Fx

AN-F2111 is Ledray's premium LED Neon with lumen output up to 350lm per meter, its built in constant current circuit board keeps even illumination without voltage drop. The flat shape with sleek line makes it more popular for lighting designers and architects, and more suitable for recessed installation

## Features

- Available in PVC and silicon version
- Black Colored Finish also available
- High IP protection (IP68)
- Rated power/M: 6W/7.2W/12W/15W
- Cutting Length :83.3mm/100mm
- Continuous Length :5m/7m/10m/15m(Single-end power feeding)



2700K - 6500K



DC<sub>12V/24V</sub> 3SDCM

5 years warranty

Ra  
90

∧  
120°

21  
□  
11

-20°C~50°C  
Operating  
Temp

up to  
50000  
hours

.IES

One  
Bin

Dimmable

## Specifications :

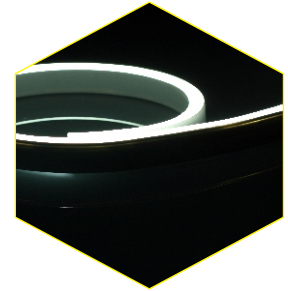
Model	Power(W)	CCT	Flux (LM/M)	Efficacy
AN-F2111W27-CV-Fx	12	2700K	>280	24
AN-F2111W30-CV-Fx	12	3000K	>320	27
AN-F2111W40-CV-Fx	12	4000K	>320	27
AN-F2111W57-CV-Fx	12	5700K	>320	27
AN-F2111R-CV-Fx	12	623nm	>110	
AN-F2111G-CV-Fx	12	525nm	>220	
AN-F2111B-CV-Fx	12	465nm	>35	

# AN-F2911Wxx-CV-Fx

AN-F2911 is Ledray's premium LED Neon with lumen output up to 350lm per meter, its built in constant current circuit board keeps even illumination without voltage drop. The domed shape with 160° beam angle make it more suitable for surface mounted installation.

## Features

- Available in PVC and silicon version
- Black Colored Finish also available
- High IP protection (IP68)
- Rated power/M: 6W/7.2W/12W/15W
- Cutting Length :100MM/167mm
- Continuous Length :5m/7m/10m/15m(Single-end power feeding)



2700K - 6500K



DC<sub>12V/24V</sub> 3SDCM

5 years warranty

Ra  
90

160°

29  
11

-20°C~50°C  
Operating  
Temp

up to  
50000  
hours

.IES

One  
Bin

Dimmable

## Specifications :

Model	Power(W)	CCT	Flux (LM/M)	Efficacy	
AN-F2911W27-CV-Fx	12	2700K	>340	35	
AN-F2911W30-CV-Fx	12	3000K	>380	35	Ip20
AN-F2911W40-CV-Fx	12	4000K	>380	35	IP67
AN-F2911W57-CV-Fx	12	5700K	>380	35	IP68
AN-F2911R-CV-Fx	12	623nm	>140		
AN-F2911G-CV-Fx	12	525nm	>280		
AN-F2911B-CV-Fx	12	465nm	>40		

# AN-F1809Wxx-CV-Fx

AN-F1809 is Ledray's premium neon flex with tight bending radius, its narrow 8mm PCB with lower drive current circuit board make it easier to bend, lower heat, longer run length and more affordable. The flat light surface with 90mm bending diameter is available in single color only, especially suitable for recessed installation.

## Features

- Available in PVC and silicon version
- High IP protection (IP68)
- Rated power/M: 3.5W/4.5W/5W
- Cutting Length :41.7mm/83.3mm
- Continuous Length : 5m/7m/10m/15m(Single-end power feeding)



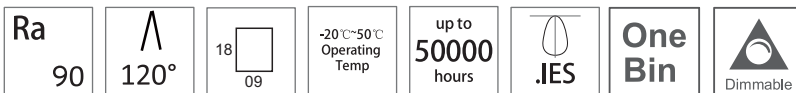
2700K - 6500K



DC<sub>12V/24V</sub>

3 SDCM

5 years warranty



## Specifications :

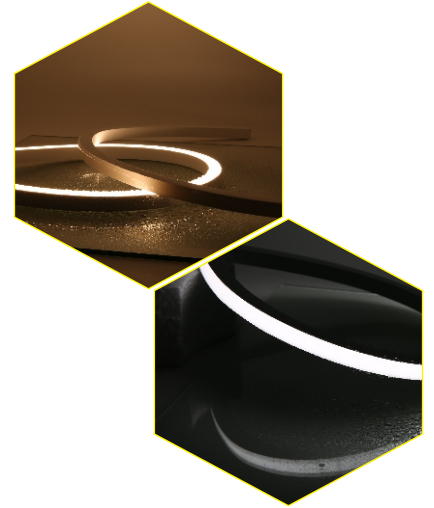
Model	Power(W)	CCT	Flux (LM/M)	Efficacy	
AN-F1809W27-CV-Fx	4.5	2700K	>120	27	
AN-F1809W30-CV-Fx	4.5	3000K	>120	27	Ip20
AN-F1809W40-CV-Fx	4.5	4000K	>120	27	IP67
AN-F1809W57-CV-Fx	4.5	5700K	>120	27	IP68
AN-F1809R-CV-Fx	4.5	623nm	>45		
AN-F1809G-CV-Fx	4.5	525nm	>80		
AN-F1809B-CV-Fx	4.5	465nm	>15		

# AN-F1010Wxx-CV-Fx

AN-F1010 is a Ledray's premium LED Neon with both Horizontal Bending and Vertical Bending available in the same dimension, which is the smallest LED Neon at present in our product range. Its square profile with tight bending diameter of 100mm is perfect for recessed installation.

## Features

- Available in PVC and silicon version
- High IP protection (Ip68)
- 3 step Macadam
- Rated power/M: 6W/7.2W/12W/15W
- Cutting Length :83.3mm/41.7mm
- Continuous Length : 5m/7m/10m(Single-end power feeding)



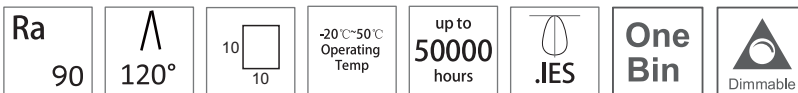
2700K - 6500K



DC<sub>12V/24V</sub>

3 SDCM

5 years warranty



## Specifications :

Model	Power(W)	CCT	Flux (LM/M)	Efficacy	
AN-F1010W27-CV-Fx	4.5	2700K	>140	31	
AN-F1010W30-CV-Fx	4.5	3000K	>140	31	Ip20
AN-F101040-CV-Fx	4.5	4000K	>140	31	IP67
AN-F1010W57-CV-Fx	4.5	5700K	>140	31	IP68
AN-F1010R-CV-Fx	4.5	623nm	>50		
AN-F1010G-CV-Fx	4.5	525nm	>200		
AN-F1010B-CV-Fx	4.5	465nm	>30		

## Accessories

High quality and reliable accessory is the key point for the projects' durability and future maintenance especially in outdoor installation.

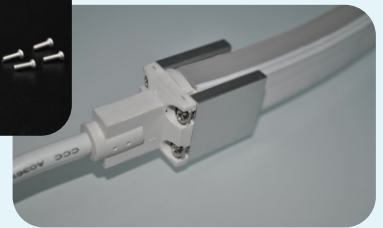
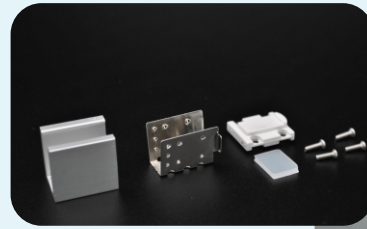
### Sleeve Connector

- Ip40
- Field Assemble Connector
- Easy and Quick to Assemble
- Splice Connector Available
- Indoor Use Only



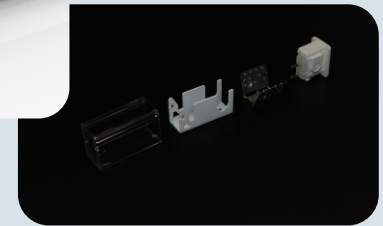
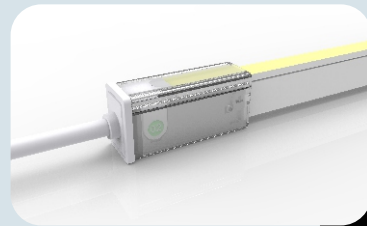
### Screw Connector

- Ip67
- Field Assemble Connector
- Fully Mechanical Sealed Outdoor Connector
- Both End and Bottom Feed Available



### Snap Connector

- Ip67
- Field Assemble Connector
- Fully Mechanical Sealed Outdoor Connector
- No screw or Extra Tool required for Installation
- Side, End and Bottom Feed Available



### Injection - molded Connector

- IP67/IP65/IP40
- Factory Fitted Connector
- Neat and Clean Appearance, can Achieve seamless Connection
- Preassembled at Factory, Ease the Pain of Connector Assembly
- Can not be Modified by Installer
- Side, End and Bottom Feed Available



### Dual Injection-molded Connector

- IP68/IP65
- Factory Fitted Connector
- Enhanced Ip68 Rated Injection-Molded Connector, Specially for Submersible Projects
- Preassembled at Factory, Ease the Pain of Connector Assembly
- Can not be Modified by Installer
- Side, End and Bottom Feed Available





## Profiles (Fixtures)

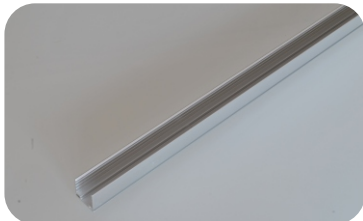
Variety of profiles are designed for different installation circumstance. Suitable profiles will play a role of protection and make the beauty of light fully displayed.

Bendable Stainless Steel Profile  
Can be Bent Horizontally and vertically  
Keep Stable Flexible Shape, Ideal for Curved Installation



Hybrid Profile  
Unique Design, Allow Light Emitting from Side  
Enhanced Design on Basis of Plastic Profile

Plastic Profile  
Thin and Neat, Easy for Transportation and Installation  
Corrosion Resistant  
White/Transparent and Custom Color Available



Standard Aluminum Profile  
Thin, Light and Inexpensive  
Easy for Installation and Uninstallation

Spring Clip Aluminum Profile  
Robust, Sleek and Dependable  
Interior Spring Clips to Hold Long Length Lighting Fixture  
with Heavy Weight  
Spring Clips can be Relocated or Added According  
to Conditions  
Suitable for Almost All Kinds of Installation



# AN-F1206Wxx-CV-Fx

AN-F1206 is a square shape LED Neon with both Horizontal Bending with Robust housing , high quality Silicon and UV proof suitable for true outdoor application. It supports easy installation with Clips and bendable track.

## Features

- Available in PVC
- High IP protection (IP 67)
- 3 step Macadam
- Rated power/M: 10W
- Cutting Length :50mm
- Continuous Length : 5mm/10mm



2700K - 6500K

**DC** 12/24/48V **3** SDCM **5** years warranty

Ra  
90

∧  
120°

12  
06

-20°C~50°C  
Operating  
Temp

up to  
**50000**  
hours

.IES

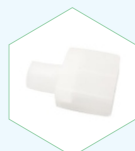
One  
Bin

Dimmable

## Specifications :

Model	Power(W)	CCT	Flux (LM/M)	Efficacy	
AN-F1206W27-CV-Fx	10	2700K	240	24	
AN-F1206W30-CV-Fx	10	3000K	240	24	Ip20
AN-F1206W40-CV-Fx	10	4000K	280	28	IP67
AN-F1206W60-CV-Fx	10	6000K	270	27	

### Accessories KIT

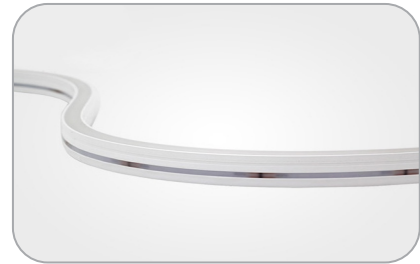


# AN-F1004Wxx-CV-Fx

AN-F1004 is a square shape LED Neon with both Horizontal Bending with Robust housing, high quality Silicon and UV proof suitable for true outdoor application. It supports easy installation with Clips and bendable track.

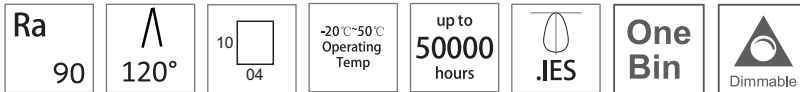
## Features

- Available in PVC
- High IP protection (IP 67)
- 3 step Macadam
- Rated power/M: 9.6W
- Cutting Length :50mm
- Continuous Length : 5mm/10mm



2700K - 6500K

**DC** 12/24/48V **3** SDCM **5** years warranty



## Specifications :

Model	Power(W)	CCT	Flux (LM/M)	Efficacy	
AN-F1004W27-CV-Fx	9.6	2700K	>610	64	
AN-F1004W30-CV-Fx	9.6	3000K	>610	64	Ip20
AN-F100440-CV-Fx	9.6	4000K	>630	66	IP67
AN-F1004W57-CV-Fx	9.6	5700K	>620	65	IP68

### Accessories KIT

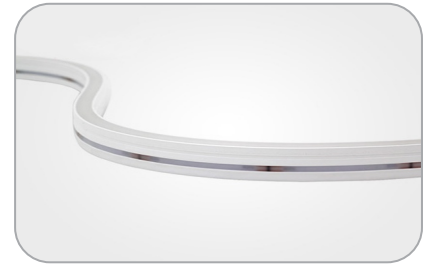


# AN-F1810RGB-CV-Fx

AN-F1810 is a square shape RGBLED Neon with both Horizontal Bending with Robust housing ,high quality Silicon and UV proof suitable for true outdoor application. It supports easy installation with Clips and bendable track

## Features

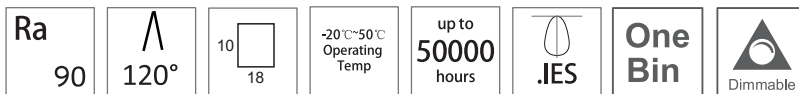
- Available in PVC
- High IP protection (IP 67)
- 3 step Macadam
- Rated power/M: 14W
- Cutting Length :100mm
- Continuous Length : 5mm/10mm



2700K - 6500K



DC 12/24/48V 3 SDCM 5 years warranty



## Specifications :

Model	Power(w)	CCT	Flux (LM/M)	Efficacy
AN-F1810R-CV-Fx	14	615~625nm	50	
AN-F1810G-CV-Fx	14	520~530nm	120	Ip20
AN-F1810B-CV-Fx	14	460~470nm	30	IP67

### Accessories KIT



# AN-F10Wxx-CV-Fx

AN-F10 is a Dome shape LED Neon with both vertical Bending with Robust housing , high quality Silicon and UV proof suitable for true outdoor application. It supports easy installation with Clips and bendable track

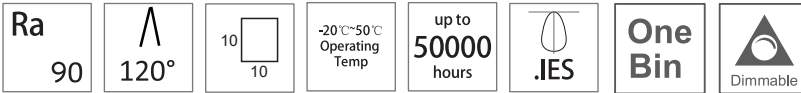
## Features

- High IP protection (IP67)
- 3 step Macadam
- Rated power/M: 8W
- Cutting Length :33.3mm
- Continuous Length : 5mm/10mm



2700K - 6500K

**DC** 12/24/48V **3** SDCM **5** years warranty



## Specifications :

Model	Power(W)	CCT	Flux (LM/M)	Efficacy	
AN-F10W27-CV-Fx	8	2700K	930	116	
AN-F10W30-CV-Fx	8	3000K	930	116	Ip20
AN-F10W40-CV-Fx	8	4000K	980	122	IP67
AN-F10W60-CV-Fx	8	6000K	950	118	

### Accessories KIT



# AN-F0713Wxx-CV-Fx

AN-F0713 is a Dome shape LED Neon with both vertical Bending with Robust housing , high quality Silicon and UV proof suitable for true outdoor application. It supports easy installation with Clips and bendable track.

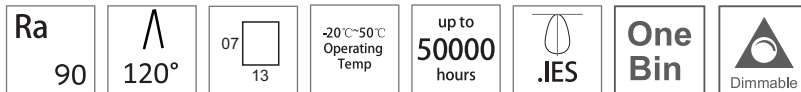
## Features

- High IP protection (IP67)
- 3 step Macadam
- Rated power/M: 18W
- Cutting Length :25mm
- Continuous Length : 5mm/10mm



2700K - 6500K

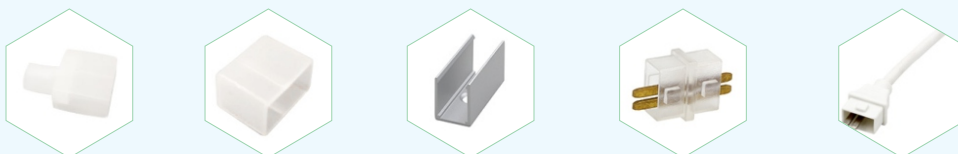
**DC** 12/24/48V **3** SDCM **5** years warranty



## Specifications :

Model	Power(W)	CCT	Flux (LM/M)	Efficacy	
AN-F0713W27-CV-Fx	18	2700K	1240	69	
AN-F0713W30-CV-Fx	18	3000K	1250	70	Ip20
AN-F0713W40-CV-Fx	18	4000K	1270	71	IP67
AN-F0713W60-CV-Fx	18	6000K	1290	72	

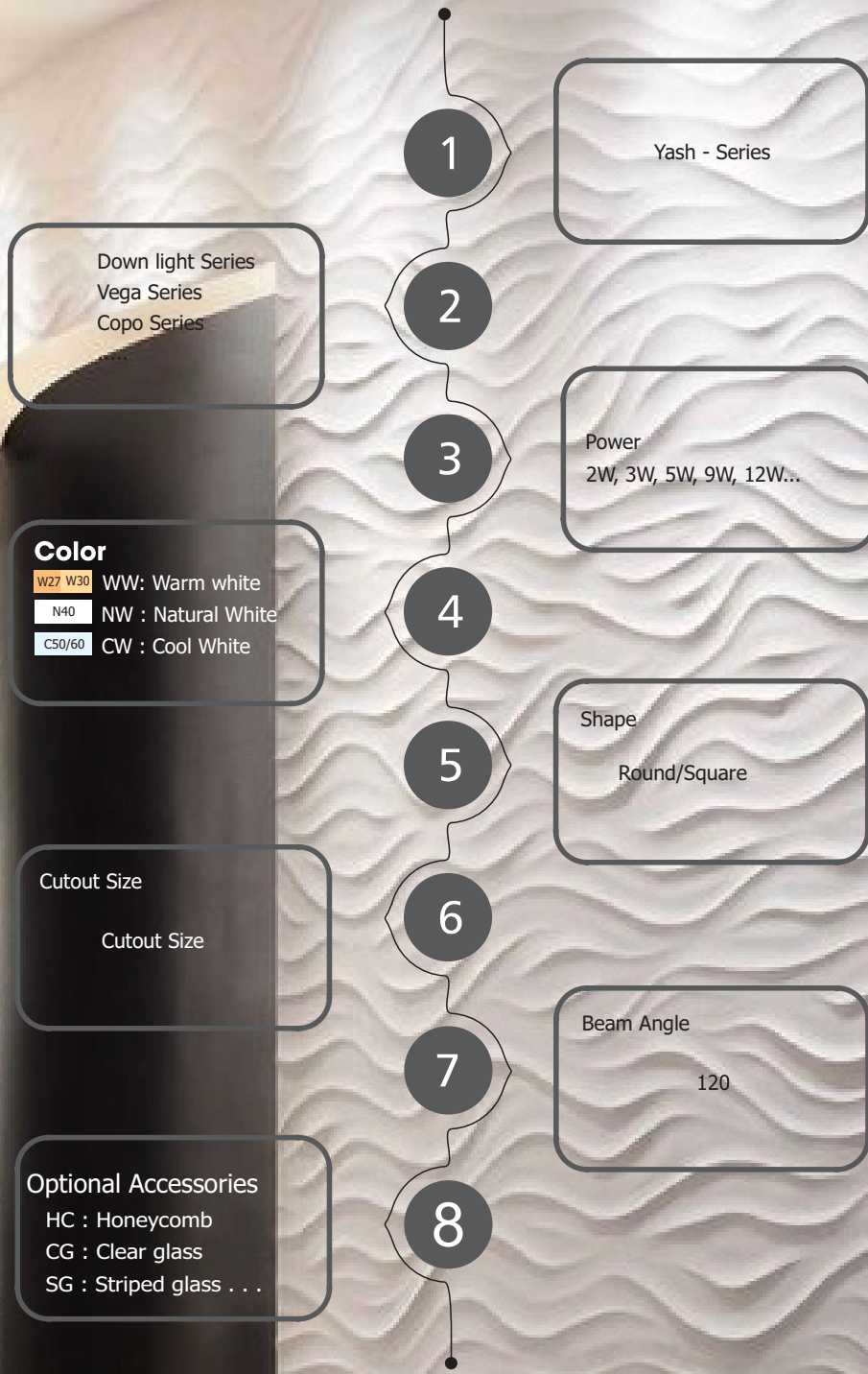
### Accessories KIT



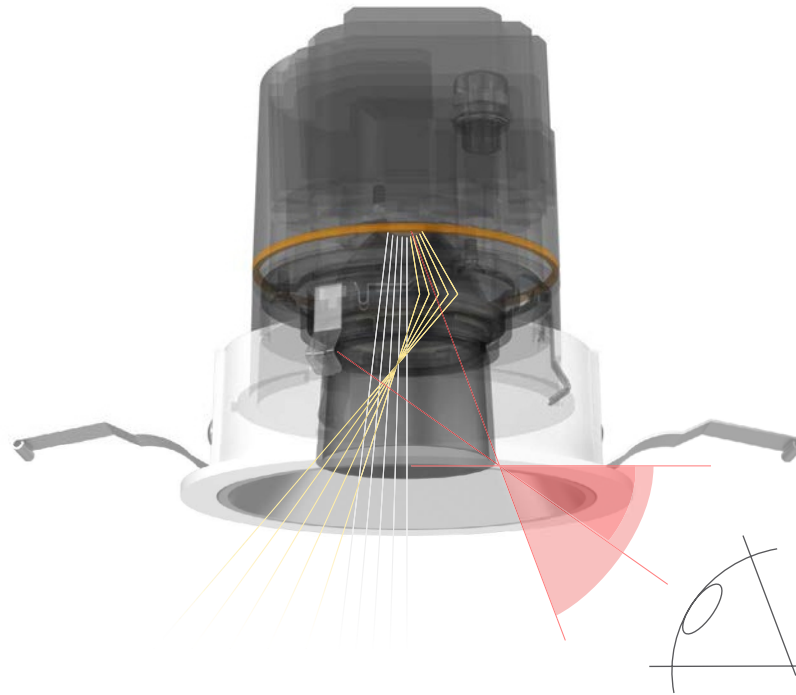
# LED Down Lights

YA-DL-XK-RD-B-O

① ② ③ ④ ⑤ ⑥ ⑦ ⑧



# Deep anti-glare



## Spot Light Concept:

### 1. Various Light distributions

- ◆ General lighting, wall washing, accentuation suit for specific lighting tasks.
- ◆ Precise speckle with four kinds of beam angle: 15°/24°/36°/60°.
- ◆ Three kinds of optical assembly: optical glass film/ honeycomb and baffle achieves different kinds of speckle.

### 2. Multi colors

- ◆ 7 colors of reflector and 4 colors of heat sink meet all kinds of decorative style.

### 3. Eccentric Design

- ◆ Eccentric design makes precise speckle via reducing stray light.






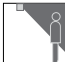


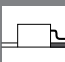


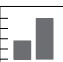

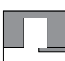

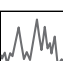


### 4. Heat Dispersion System

- ◆ Straight heat sink design achieves high performance of heat dispersion and keeps LED chip working in high lumen and in a long lifetime.

### 5. Anti Glare

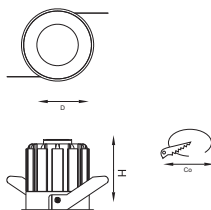
- ◆ Led chip is fixed deep inside to create a perfect cutoff angle in 40°. Dark light effect achieves UGR<9, reduces discomfort glare and provides better visual effect.

## Special characteristics:

 High Efficiency	 RA>90	 IP20 / IP65	 High quality Aluminum
 Working Temp : 30°C -+ 40°C	 Anti Glare	 High Performance heat sink	 Long Life time
 Suitable for Low Distance	 Material in anodization	 Honey Comb Stripped Lens e.t.c	 Different Sizes
 No Flicker	 Remote Driver	 DALI 1/0 - 10V/TRIAC	 Voltage Surge Protection
 Easy Installation		 High Lux	



## VEGA SERIES



Model	Max Watt	Lumens	H	D	Co
YA-DL-9K-RD	Max. 09 W	630 - 864 LM	75	72	65
YA-DL-15K-RD	Max. 15 W	1050 - 1440 LM	82	82	76
YA-DL-22K-RD	Max. 22 W	1540 - 2112 LM	97	82	76
YA-DL-30K-RD	Max. 30 W	2100 - 2880 LM	116	120	113
YA-DL-35K-RD	Max. 35 W	2450 - 3360 LM	126	120	113
YA-DL-42K-RD	Max. 42 W	2940 - 4032 LM	141	120	113



Frosted Glass



Clear Glass

Beam Angle

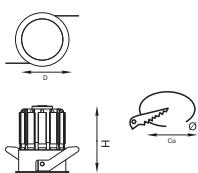


**IP20**
**80 CRI**
**85 CRI**
**90 CRI**



Finish Color :

## COPO SERIES



Model	Max Watt	Lumens	H	D	Co
YA-DL-5K-RD	Max. 05 W	350 - 480 LM	61	50	45
YA-DL-9K-RD	Max. 09 W	630 - 864 LM	75	65	60
YA-DL-15K-RD	Max. 15 W	1050 - 1440 LM	95	84	77



Frosted Glass



Clear Glass

Beam Angle

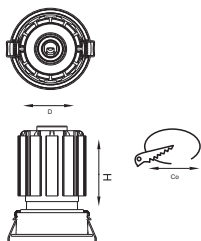


**IP20**
**80 CRI**
**85 CRI**
**90 CRI**

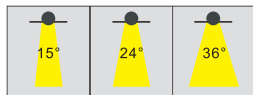


Finish Color :

## EVAN SERIES



Beam angle



Model	Max Watt	Lumens	H	D	Co
YA-DL-11K-RD	Max. 11 W	770 - 1056 LM	85	72	65
YA-DL-15K-RD	Max. 15 W	1050 - 1440 LM	100	72	65
YA-DL-20K-RD	Max. 20 W	1400 - 1920 LM	82	97	76



Frosted Glass

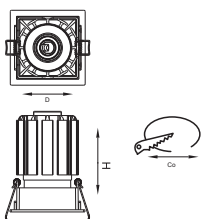


Clear Glass

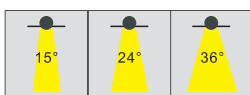


Finish Color :

## DURO SERIES



Beam Angle



Model	Max Watt	Lumens	H	D	Co
YA-DL-11K-SD	Max. 11 W	770 - 1056 LM	85	72x72	65x65
YA-DL-15K-SD	Max. 15 W	1050 - 1440 LM	100	72x72	65x65
YA-DL-20K-SD	Max. 20 W	1400 - 1920 LM	117	87x87	80x80



Frosted Glass

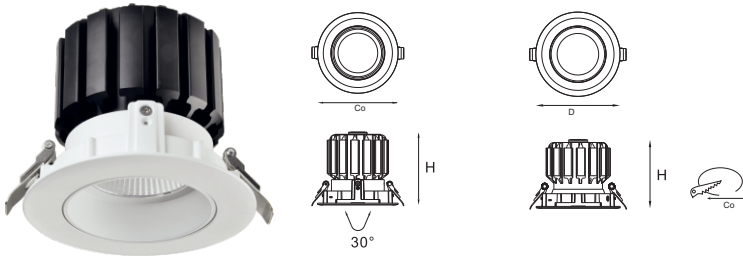


Clear Glass



Finish Color :

## OSMO SERIES



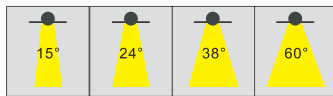
Model	Max Watt	Lumens	H	D	Co
YA-DL-9K-RD	Max. 09 W	630 - 864 LM	71	90	75
YA-DL-15K-RD	Max. 15 W	1050 - 1440 LM	82	110	100
YA-DL-22K-RD	Max. 22 W	1540 - 2112 LM	97	110	100
YA-DL-25K-RD	Max. 25 W	1750 - 2400 LM	70	135	125
YA-DL-30K-RD	Max. 30 W	2100 - 2880 LM	106	142	130
YA-DL-35K-RD	Max. 35 W	2450 - 3360 LM	116	142	130
YA-DL-42K-RD	Max. 42 W	2940 - 4032 LM	153	142	130



Frosted Glass

Clear Glass

### Beam angle



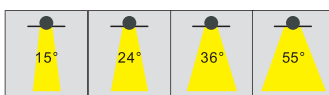
Finish Color :

## XENA SERIES



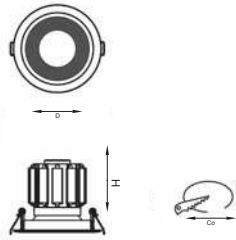
Model	Max Watt	Lumens	H	D	Co
YA-DL-9K-RAD	Max. 09 W	630 - 864 LM	50	90	75
YA-DL-16K-RAD	Max. 16 W	1120 - 1568 LM	70	110	95

### Beam Angle



Finish Color :

## UBLO SERIES



Model	Max Watt	Lumens	H	D	Co
YA-DL-12K-RD	Max. 15 W	840 - 1176 LM	95	110	100
YA-DL-20K-RD	Max. 20 W	1400 - 1960 LM	108	142	130

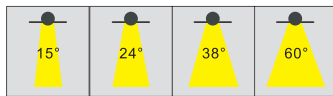


Frosted Glass



Clear Glass

Beam angle



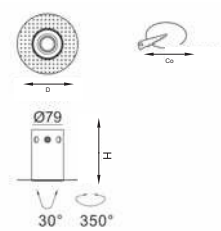


 IP20
 
 80 CRI
 
 85 CRI
 
 90 CRI



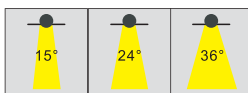
Finish Color :  

## KYRO SERIES



Model	Max Watt	Lumens	H	D	Co
YA-DL-6K-RD	Max. 6 W	350 - 510 LM	88	150	80
YA-DL-13K-RD	Max. 13 W	700 - 1100 LM	128	150	80

Beam Angle



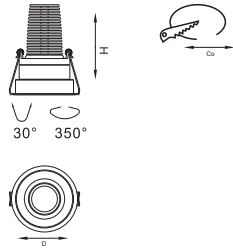


 IP20
 
 80 CRI
 
 85 CRI
 
 90 CRI



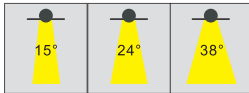
Finish Color :  

## WYNN SERIES



Model	Max Watt	Lumens	H	D	Co
YA-DL-6K-RD	Max. 6 W	350 - 510 LM	75	82	75
YA-DL-13K-RD	Max. 13 W	700 - 1100 LM	112	82	75

Beam angle

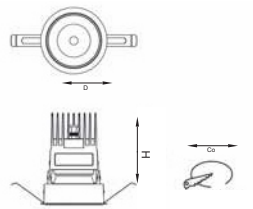


IP20
 
 80 CRI
 
 90 CRI



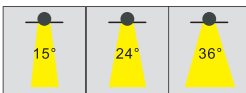
Finish Color :

## OTEL SERIES



Model	Max Watt	Lumens	H	D	Co
YA-DL-6K-RD	Max. 06 W	350 - 510 LM	92	70	65
YA-DL-12K-RD	Max. 12 W	840 - 1176 LM	111	80	75
YA-DL-20K-RD	Max. 20 W	1418 - 1960 LM	130	115	110

Beam Angle

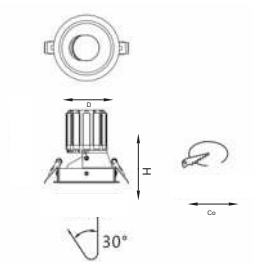


IP20
 
 80 CRI
 
 90 CRI



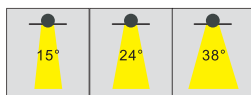
Finish Color :

## KEPE SERIES



Model	Max Watt	Lumens	H	D	Co
YA-DL-15K-RD	Max. 15 W	1050 - 1440 LM	126	116	105
YA-DL-20K-RD	Max. 20 W	1260 - 1764 LM	141	116	105

Beam angle

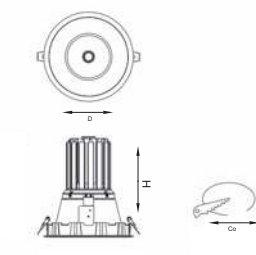


IP20
 
 80 CRI
 85 CRI
 90 CRI



Finish Color :

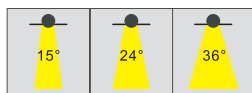
## DENA SERIES



Model	Max Watt	Lumens	H	D	Co
YA-DL-30K-RAD	Max. 30 W	2106 - 2880 LM	183	201	185
YA-DL-50K-RAD	Max. 50 W	3250 - 4600 LM	246	218	210



Beam Angle

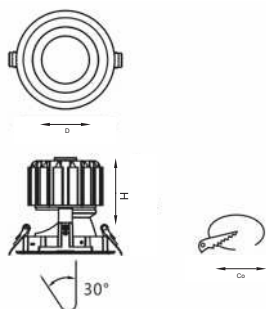


IP20
 
 80 CRI
 85 CRI
 90 CRI



Finish Color :

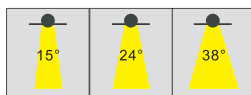
## ENOP SERIES



Model	Max Watt	Lumens	H	D	Co
YA-DL-20K-RD	Max. 20 W	1400 - 1920 LM	139	142	130
YA-DL-30K-RD	Max. 30 W	2100 - 2880 LM	154	142	130
YA-DL-42K-RD	Max. 42 W	2940 - 4032 LM	179	142	130



Beam angle

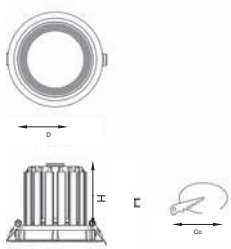


DIMMABLE QUICK FIX IP20 CE 80 CRI 85 CRI 90 CRI



Finish Color :

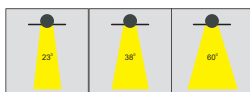
## NIMI SERIES



Model	Max Watt	Lumens	H	D	Co
YA-DL-15K-RD	Max. 15 W	1050 - 1440 LM	86	165	150
YA-DL-25K-RD	Max. 25 W	1750 - 2400 LM	106	165	150
YA-DL-42K-RD	Max. 42 W	2958 - 4016 LM	136	165	150



Beam angle



DIMMABLE QUICK FIX IP44 CE 80 CRI 85 CRI 90 CRI



Finish Color :

## ECON SERIES



Beam Angle



Model	Max Watt	Lumens	H	D	Co
YA-DL-7K-RD	Max. 07 W	525 - 700 LM	53	90	75
YA-DL-10K-RD	Max. 10 W	750 - 1000 LM	56	108	90
YA-DL-13K-RD	Max. 13 W	975 - 1300 LM	59	138	125
YA-DL-15K-RD	Max. 15 W	1125 - 1500 LM	58	155	150
YA-DL-19K-RD	Max. 19 W	1425 - 1900 LM	58	190	170
YA-DL-24K-RD	Max. 24 W	1800 - 2400 LM	66	230	210



Frosted Glass



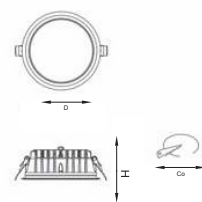
Clear Glass

DIMMABLE QUICK-FIX IP20 CE 80 CRI 85 CRI 90 CRI



Finish Color :

## STND SERIES



Beam Angle



Model	Max Watt	Lumens	H	D	Co
YA-DL-10-RAD	Max. 10 W	750 - 1000 LM	68	108	100
YA-DL-15-RAD	Max. 15 W	1125 - 1500 LM	68	135	125
YA-DL-20-RAD	Max. 20 W	1425 - 1900 LM	68	163	155



Frosted Glass



Clear Glass

DIMMABLE QUICK-FIX IP40 CE 80 CRI 85 CRI 90 CRI



Finish Color :



## MINI SERIES

### YA-SL-2K-R27-D



Technical : 2W CREE Chip, 80 to 120 Lm/W

CRI 80+ 2700K 3000K 4000K 5000K |

19°, 34°, 46°, 48+18° | Ip20

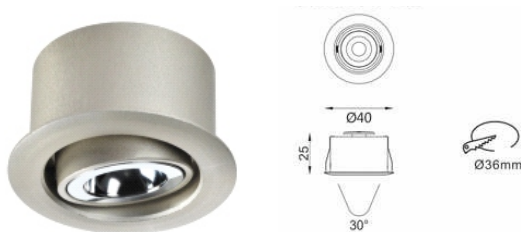
Dimension: Ø30\*H27mm cut out:Ø25mm

Driver : Remote Non Dimmable Driver

Material : Aluminum

Surface Color :

### YA-SL-2K-R36-D



Technical : 2W CREE Chip, 80 to 120 Lm/W

CRI 80+ 2700K 3000K 4000K 5000K |

19°, 34°, 46°, 48+18° | Ip20

Dimension: Ø30\*H27mm cut out:Ø25mm

Driver : Remote Non Dimmable Driver

Material : Aluminum

Surface Color :

### YA-SL-3K-R35-D



Technical : 2W CREE Chip, 80 to 120 Lm/W

CRI 80+ 2700K 3000K 4000K 5000K |

17°, 26°, 40° | Ip20

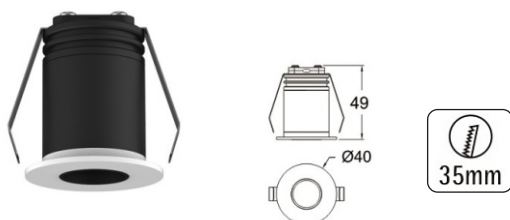
Dimension: Ø60\*H60.7mm cut out:Ø54mm

Driver : Remote Non Dimmable Driver

Material : Aluminum

Surface Color :

### YA-SL-2K-R35-D



Technical : 2W CREE Chip, 80 to 120 Lm/W

CRI 80+ 2700K 3000K 4000K 5000K |

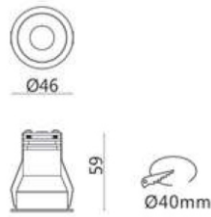
12°, 15°, 24° | IP20

Driver : Remote Non Dimmable Driver

Material : Aluminum

Surface Color :

## YA-SL-3K-R35-D



Technical : 2W CREE Chip, 80 to 120 Lm/W

CRI 80+ 2700K 3000K 4000K 5000K |

19°, 34°, 46°, 48+18° | Ip20

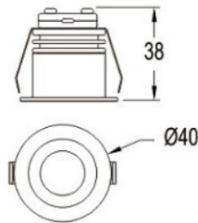
Dimension: Ø42x75mm cut out:Ø35mm

Driver : Remote Non Dimmable Driver

Material : Aluminum

Surface Color :

## YA-SL-2K-R45-D



Technical : 2W CREE Chip, 80 to 120 Lm/W

CRI 80+ 2700K 3000K 4000K 5000K |

19°, 34°, 46°, 48+18° | Ip20

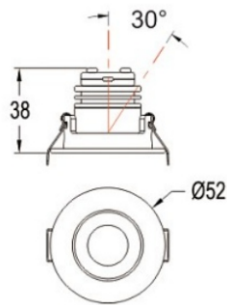
Dimension: Ø52x38mm cut out:Ø45mm

Driver : Remote Non Dimmable Driver

Material : Aluminum

Surface Color :

## YA-SL-3K-R35-D



Technical : 2W CREE Chip, 80 to 120 Lm/W

CRI 80+ 2700K 3000K 4000K 5000K | 17°, 26°, 40° | Ip20

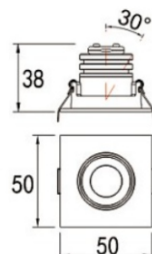
Dimension: Ø50x50x38mm cut out:Ø45mm

Driver : Remote Non Dimmable Driver

Material : Aluminum

Surface Color :

## YA-SL-2K-S50-D



Technical : 2W CREE Chip, 80 to 120 Lm/W

CRI 80+ 2700K 3000K 4000K 5000K | 17°, 26°, 40° | Ip20

Dimension: Ø81x62mm cut out:Ø55mm

Driver : Remote Non Dimmable Driver

Material : Aluminum

Surface Color :



## MODO SERIES

### YA-DL-M9K-RX-D



Technical : 6/9W CREE /Bridgelux, 80 to 120 Lm/W

CRI 80+ 2700K 3000K 4000K 5000K |

15°/24°/38°/55° IP20

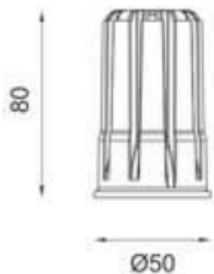
Efficacy: 80 - 120LM/W

Driver : Non Dimmable Driver /Dimmable

Material : Aluminum

Surface Color :

### YA-DL-M15K-RX-D



Technical : 15W CREE /Bridgelux, 80 to 120 Lm/W

CRI 80+ 2700K 3000K 4000K 5000K | 15°/24°/38°/55° IP20

Efficacy: 80 - 120LM/W

Driver : Non Dimmable Driver /Dimmable

Material : Aluminum

Surface Color :

# Housing Selection



A  
Size : Ø80mm  
Cut out : 75mm



B  
Size : Ø80mm  
Cut out : 75mm



C  
Size : Ø80mm  
Cut out : 70mm



D  
Size : Ø80mm  
Cut out : 70mm



E  
Size : Ø91mm  
Cut out : 92mm



F  
Size : Ø80mm  
Cut out : 70mm



G  
Size : SQ84X75  
Cut out : SQ85X76



H  
Size : Ø80mm  
Cut out : 70mm



I  
Size : SQ82mm  
Cut out : SQ78mm



J  
Size : Ø95mm  
Cut out : 85mm



K  
Size : SQ73mm  
Cut out : SQ75mm



L  
Size : SQ82mm  
Cut out : SQ78mm



M  
Size : SQ95mm  
Cut out : SQ85mm



N  
Size : SQ82mm  
Cut out : SQ83mm



O  
Size : Ø80mm  
Cut out : 75mm



P  
Size : Ø80mm  
Cut out : 75mm



Q  
Size : Ø80mm  
Cut out : 75mm



R  
Size : Ø80mm  
Cut out : 75mm



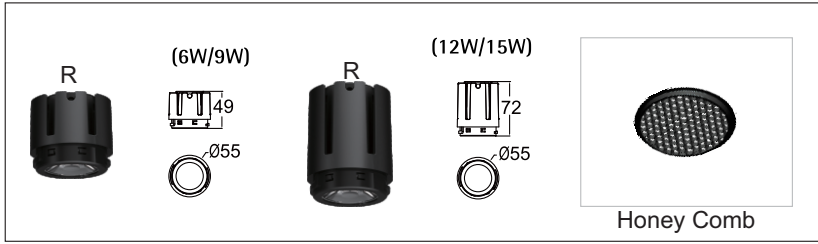
S  
Size : Ø80mm  
Cut out : 75mm



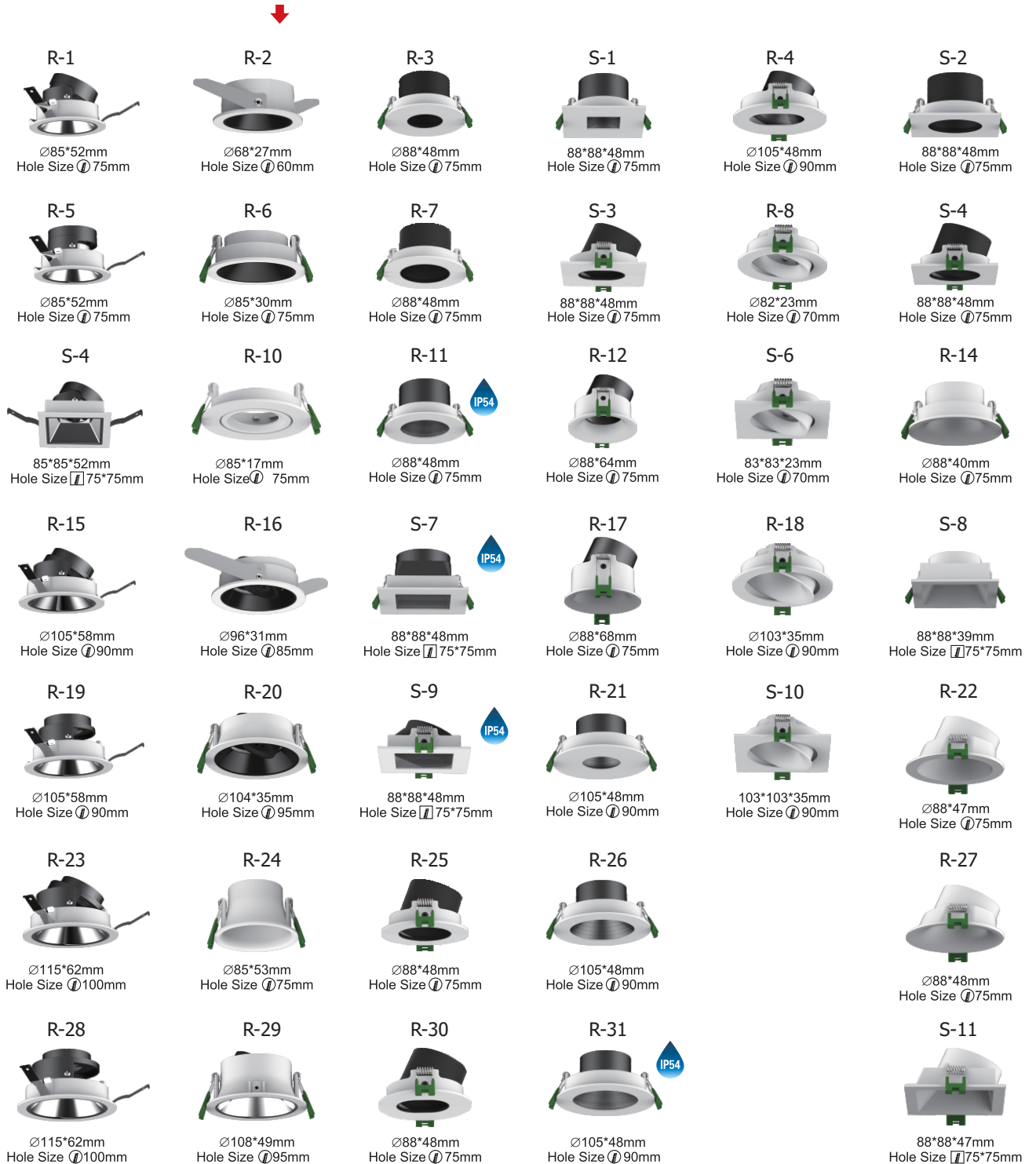
T  
Size : Ø80mm  
Cut out : 75mm

# OPMO SERIES

OPTIONAL MODULE

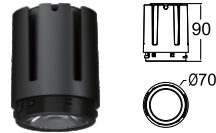


Housing Selections



# EFFY SERIES

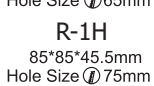
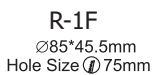
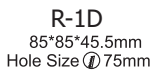
RA (24W)



RB (28W/33W)



RC (38W/42W)



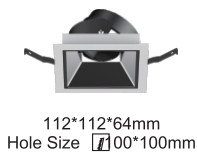
RA-1



RA-2



RA-3



RA-4



RA-5



RA-6



RA-7



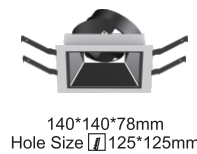
RB-1



RB-2



RB-3



RB-4



RB-5



RB-6



RB-7



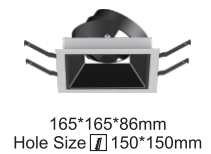
RC-1



RC-2



RC-3



RC-4



RC-5

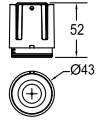


# GRIL SERIES

module

Housing kit

LA  
(5W/6W/9W/10W)



LA-1



Ø75\*37mm  
Hole Size  $\varnothing$ 65mm

LA-2



75\*75\*37mm  
Hole Size  $\square$ 65\*65mm

LA-3



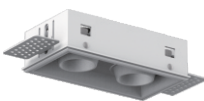
140\*75\*37mm  
Hole Size  $\square$ 130\*65mm

LA-4



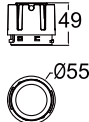
74\*74\*39mm  
Hole Size  $\square$ 75\*75mm

LA-5



139\*74\*39mm  
Hole Size  $\square$ 140\*75mm

LB  
(6W/9W)



LB/LC-1



Ø90\*37mm  
Hole Size  $\varnothing$ 80mm

LB/LC-2



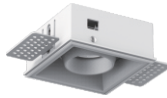
90\*90\*37mm  
Hole Size  $\square$ 80\*80mm

LB/LC-3



175\*90\*37mm  
Hole Size  $\square$ 165\*80mm

LB/LC-4



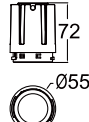
89\*89\*39mm  
Hole Size  $\square$ 90\*90mm

LB/LC-5

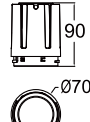


174\*89\*39mm  
Hole Size  $\square$ 175\*90mm

LC  
(12W/15W)



LD  
(24W)

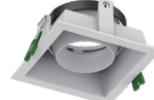


LD-1



Ø110\*45mm  
Hole Size  $\varnothing$ 95mm

LD-2



110\*110\*45mm  
Hole Size  $\square$ 95\*95mm

LD-3



220\*110\*45mm  
Hole Size  $\square$ 205\*95mm

LD-4



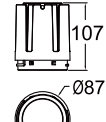
104\*104\*45mm  
Hole Size  $\square$ 105\*105mm

LD-5



214\*104\*45mm  
Hole Size  $\square$ 215\*105mm

LE  
(28W/33W)

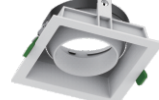


LE-1



Ø130\*53mm  
Hole Size  $\varnothing$ 115mm

LE-2



130\*130\*53mm  
Hole Size  $\square$ 115\*115mm

LE-3



260\*130\*53mm  
Hole Size  $\square$ 245\*115mm

LE-4



124\*124\*53mm  
Hole Size  $\square$ 125\*125mm

LE-5



254\*124\*53mm  
Hole Size  $\square$ 255\*125mm

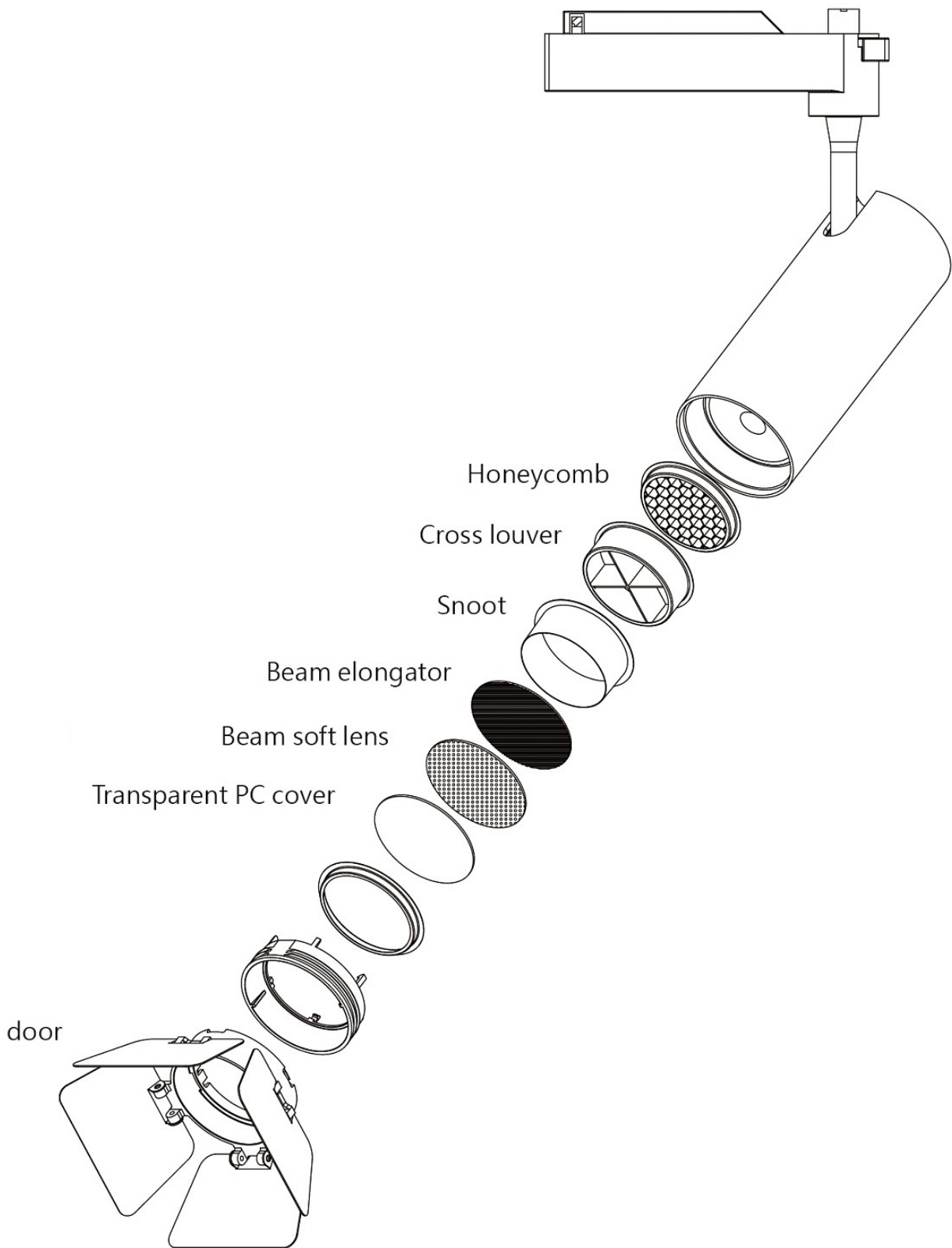


## LED Track Light



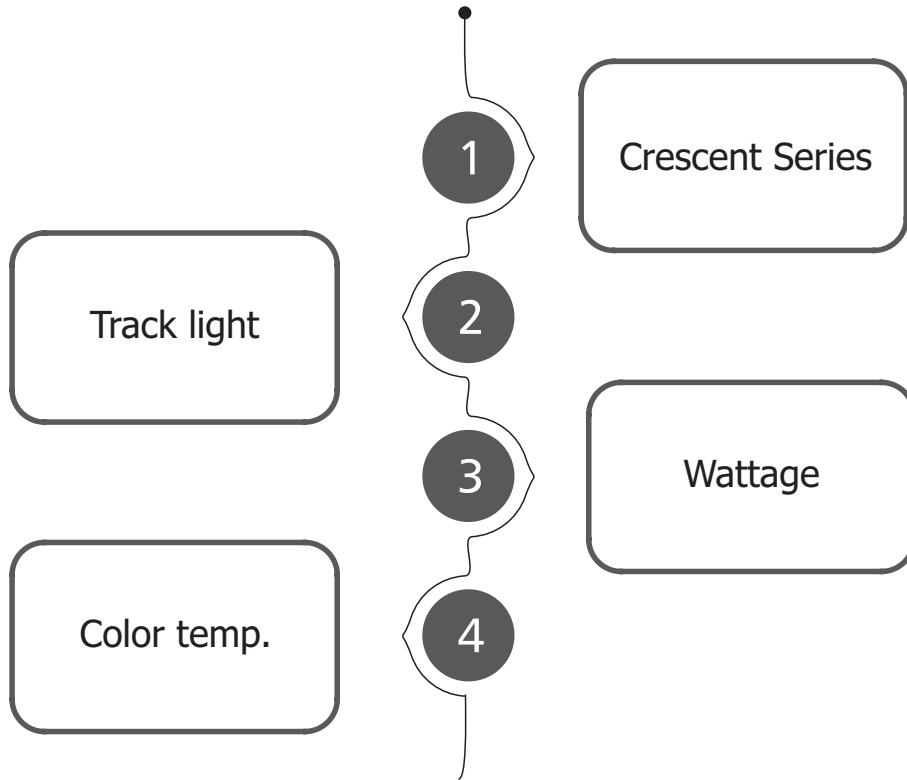


# Anti-glare Accessories

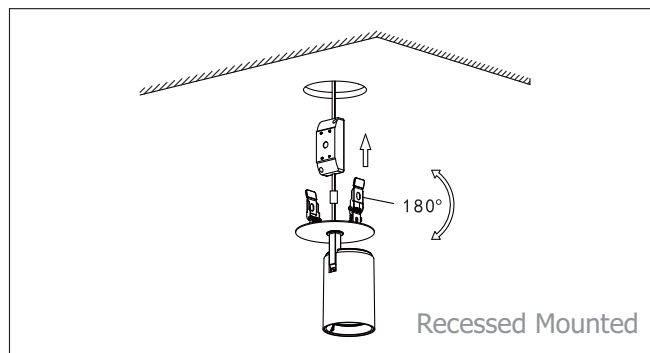
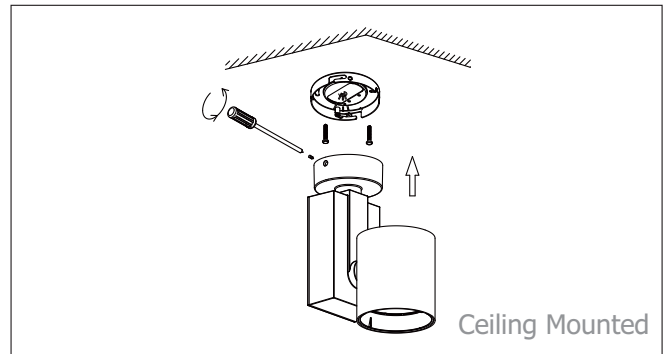
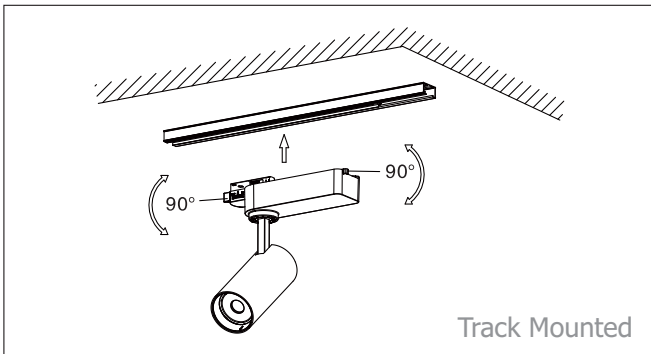


# CR-TL-W-K

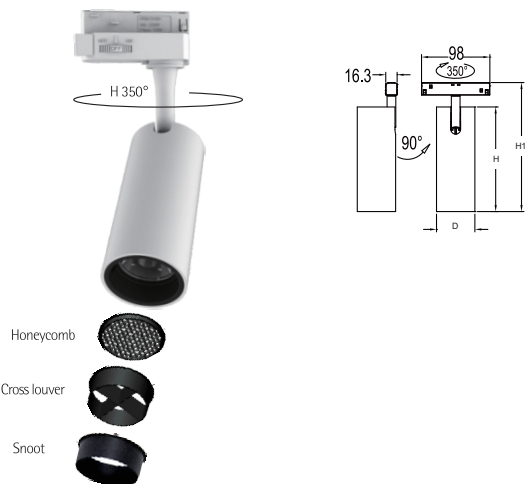
- ① ② ③ ④



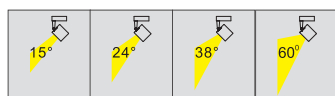
## Installation Options



## KASKO SERIES



Beam angle

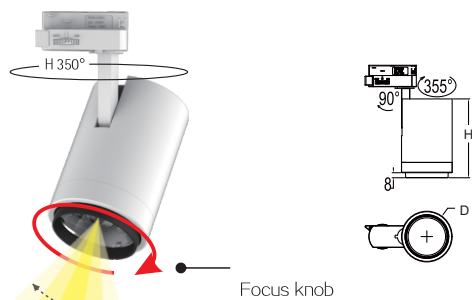


Model	Max Watt	Lumions	H	D	H1
CR-TL-15X	Max. 15 W	1050 - 1440 LM	145	72	184
CR-TL-20X	Max. 20 W	1400 - 1920 LM	150	55	185
CR-TL-24X	Max. 24 W	1680 - 2304 LM	155	65	194
CR-TL-28X	Max. 28 W	1960 - 2688 LM	155	65	194
CR-TL-33X	Max. 33 W	2310 - 3168 LM	132	85	163



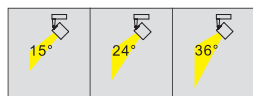
Finish Color :

## IVELA SERIES



Focus knob

Beam angle

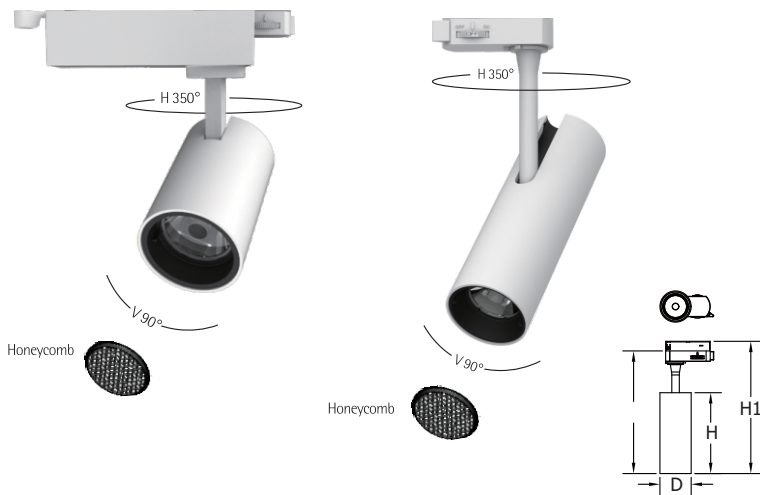


Model	Max Watt	Lumions	H	D	H1
CR-TL-24X	Max. 24 W	1680 - 2304 LM	123	79	155
CR-TL-33X	Max. 33 W	2310 - 3168 LM	140	90	175



Finish Color :

## JOOMO SERIES



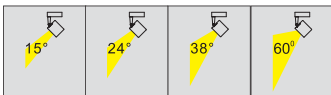
Model	Max Watt	Lumions	H	D	H1
CR-TL-6X	Max. 6 W	420 - 576 LM	134	52	220
CR-TL-9X	Max. 9 W	630 - 864 LM	134	52	220
CR-TL-12X	Max. 12 W	840 - 1152 LM	134	52	220
CR-TL-15X	Max. 15 W	1050 - 1440 LM	110	54	160
CR-TL-20X	Max. 20 W	1400 - 1920 LM	170	55	235

**IP20**
**80 CRI**
**85 CRI**
**90 CRI**

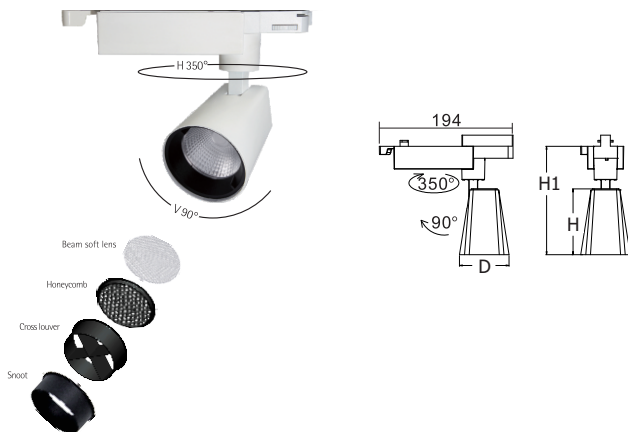


Finish Color :

Beam angle



## POWER SERIES



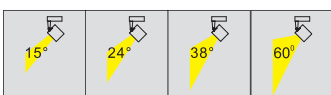
Model	Max Watt	Lumions	H	D	H1
CR-TL-9X	Max. 9 W	630 - 864 LM	95	72	157
CR-TL-12X	Max. 12 W	840 - 1152 LM	95	72	157
CR-TL-15X	Max. 15 W	1050 - 1440 LM	95	72	157

**IP20**
**80 CRI**
**85 CRI**
**90 CRI**

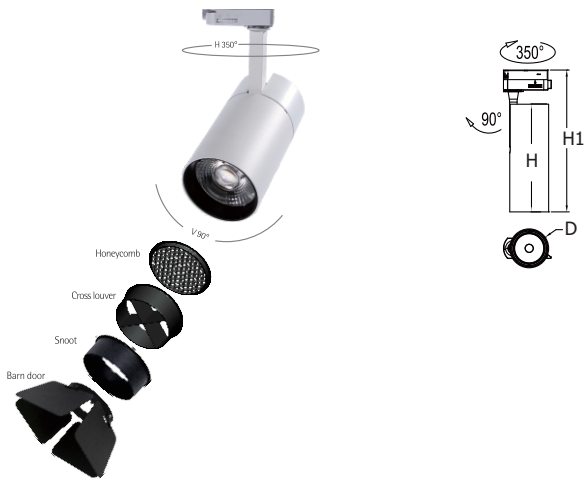


Finish Color :

Beam angle



## LARGO SERIES



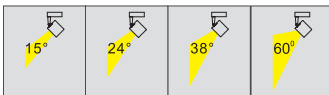
Model	Max Watt	Lumions	H	D	H1
CR-TL-30X	Max. 30 W	2100 - 2880 LM	180	65	237
CR-TL-33X	Max. 33 W	2310 - 3168 LM	165	72	242
CR-TL-40X	Max. 40 W	2800 - 3840 LM	150	90	206

IP20
 
 80 CRI
 
 85 CRI
 
 90 CRI

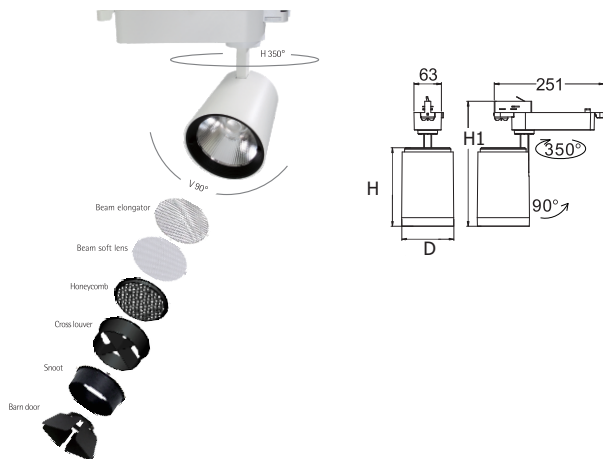


Finish Color :

Beam angle



## VISOR SERIES



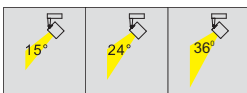
Model	Max Watt	Lumions	H	D	H1
CR-TL-33K	Max. 33 W	2310 - 3168 LM	121	105	227
CR-TL-38K	Max. 38 W	2660 - 3648 LM	121	105	227
CR-TL-42K	Max. 42 W	2940 - 4032 LM	180	120	287
CR-TL-50K	Max. 50 W	3500 - 4800 LM	144	125	256

IP20
 
 80 CRI
 
 85 CRI
 
 90 CRI

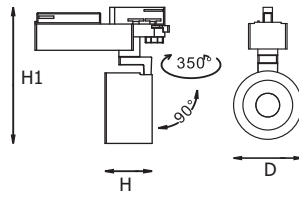


Finish Color :

Beam angle

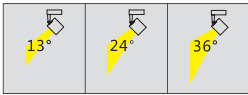


## SENZA SERIES



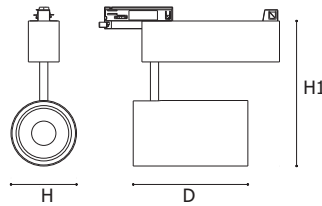
Model	Max Watt	Lumions	H	D	H1
CR-TL-15X	Max. 15 W	1050 - 1580 LM	62	95	201
CR-TL-20X	Max. 20 W	1400 - 2100 LM	62	110	212
CR-TL-30X	Max. 30 W	2100 - 3120 LM	82	110	212

Beam angle



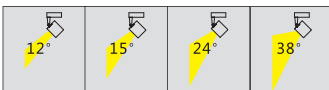
Finish Color :

## ADRIA SERIES



Model	Max Watt	Lumions	H	D	H1
CR-TL-15X	Max. 15 W	1050 - 1580 LM	140	60	163
CR-TL-20X	Max. 20 W	1400 - 2100 LM	140	70	168
CR-TL-30X	Max. 30 W	2100 - 2943 LM	140	80	178

Beam angle

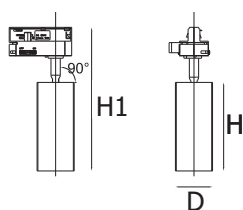
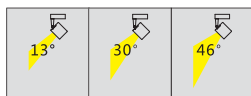


Finish Color :

## MARIO SERIES



Beam angle



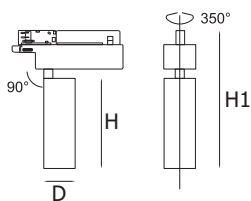
Model	Max Watt	Lumions	H	D	H1
CR-TL-5X	Max. 5 W	300 - 425 LM	105	44	170
CR-TL-20X	Max. 20 W	1200 - 1710 LM	85	86	186
CR-TL-30X	Max. 30 W	1800 - 2550 LM	50	114	126
CR-TL-30X	Max. 30 W	1800 - 2550 LM	86	126/86	186

DIMMABLE QUICK FIX IP20 CE 80 CRI 85 CRI 90 CRI



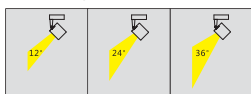
Finish Color :

## YENDI SERIES



Model	Max Watt	Lumions	H	D	H1
CR-TL-15X	Max. 15 W	1050 - 1580 LM	160	60	250
CR-TL-25X	Max. 25 W	1750 - 2550 LM	160	80	250
CR-TL-35X	Max. 35 W	2450 - 3400 LM	160	96	250

Beam angle

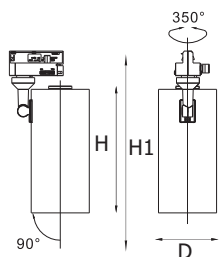


DIMMABLE QUICK FIX IP20 CE 80 CRI 85 CRI 90 CRI



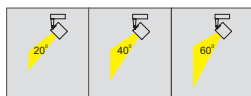
Finish Color :

## TASKY SERIES



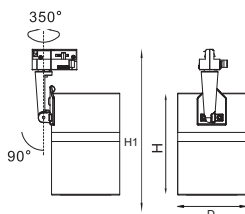
Model	Max Watt	Lumens	H	D	H1
CR-TL-6X	Max. 6 W	420 - 605 LM	95	40	156
CR-TL-10X	Max. 10 W	700 - 1020 LM	110	47	171
CR-TL-15X	Max. 15 W	1050 - 1550 LM	165	47	226
CR-TL-20X	Max. 20 W	1400 - 2100 LM	140	80	201
CR-TL-30X	Max. 30 W	2100 - 2943 LM	175	80	236

Beam angle



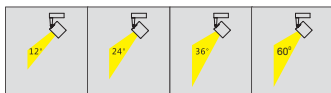
Finish Color :

## STYLO SERIES



Model	Max Watt	Lumens	H	D	H1
CR-TL-12X	Max. 12 W	840 - 1152 LM	108	80	178
CR-TL-18X	Max. 18 W	1260 - 1728 LM	128	80	205
CR-TL-22X	Max. 22 W	1540 - 2112 LM	138	80	213
CR-TL-30X	Max. 30 W	2100 - 2800LM	152	113	213
CR-TL-35X	Max. 35 W	2450 - 3360 LM	142	113	203
CR-TL-42X	Max. 42 W	2940 - 4032 LM	167	113	228

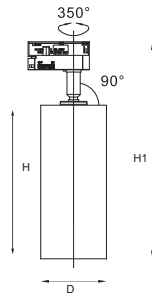
Beam angle



Finish Color :

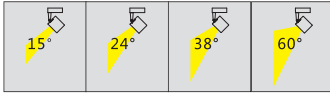


## SERENE SERIES



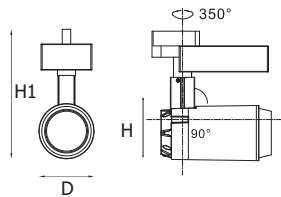
Model	Max Watt	Lumens	H	D	H1
CR-TL-18X	Max. 18 W	1260 - 1764 LM	200	80	262
CR-TL-25X	Max. 25 W	1750 - 2450 LM	200	80	262

Beam angle



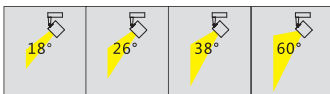
Finish Color :

## RENDEN SERIES



Model	Max Watt	Lumens	H	D	H1
CR-TL-15X	Max. 15 W	1050 - 1470 LM	100	86	161
CR-TL-30X	Max. 30 W	2107 - 2943 LM	163	97	224
CR-TL-42X	Max. 42 W	2958 - 4116 LM	168	97	229

Beam angle



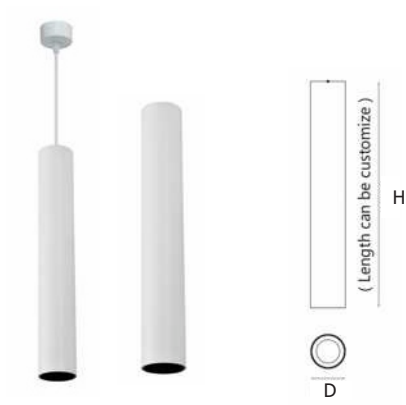
Finish Color :

# LED Pendant Light

---

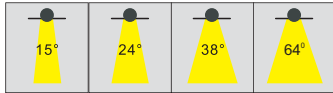


## SUPEDO SERIES



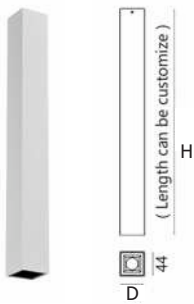
Model	Max Watt	Lumions	H	D
CR-PL-6X	Max. 6 W	420 - 605 LM	400	45
CR-PL-15X	Max. 15 W	1050 - 1550 LM	400	61

Beam angle



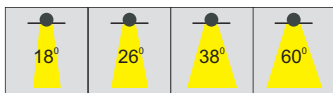
Finish Color :

## PRISTO SERIES



Model	Max Watt	Lumions	H	D
CR-PL-5X	Max. 5 W	300 - 425 LM	400	44

Beam angle



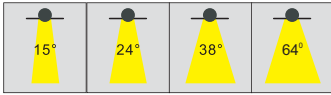
Finish Color :

## LUXURI SERIES



Model	Max Watt	Lumions	H	D
CR-PL-12X	Max. 12 W	840 - 1176 LM	185	80
CR-PL-18X	Max. 18 W	1260 - 1764 LM	128	80
CR-PL-22X	Max. 22 W	1540 - 2156 LM	138	80
CR-PL-40X	Max. 40 W	2800 - 3920 LM	185	113

Beam angle



IP20
 
 80 CRI
 85 CRI
 90 CRI



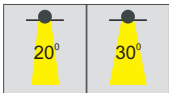
Finish Color :

## SIMANA SERIES



Model	Max Watt	Lumions	H	D
CR-PL-18X	Max. 18 W	1242 - 1530 LM	185	80
CR-PL-25X	Max. 25 W	1750 - 2125 LM	185	80

Beam angle



IP20
 
 80 CRI
 85 CRI
 90 CRI



Finish Color :

## JONAM SERIES



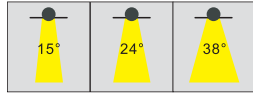
D



H

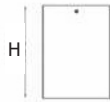
Model	Max Watt	Lumens	H	D
CR-PL-9X	Max. 9 W	630 - 864 LM	140	73

Beam angle

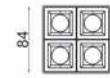


Finish Color :

## DENSY SERIES



H

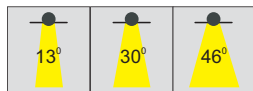


84

D

Model	Max Watt	Lumens	H	D
CR-PLX	Max. 20 W	1200 - 1700 LM	120	84

Beam angle



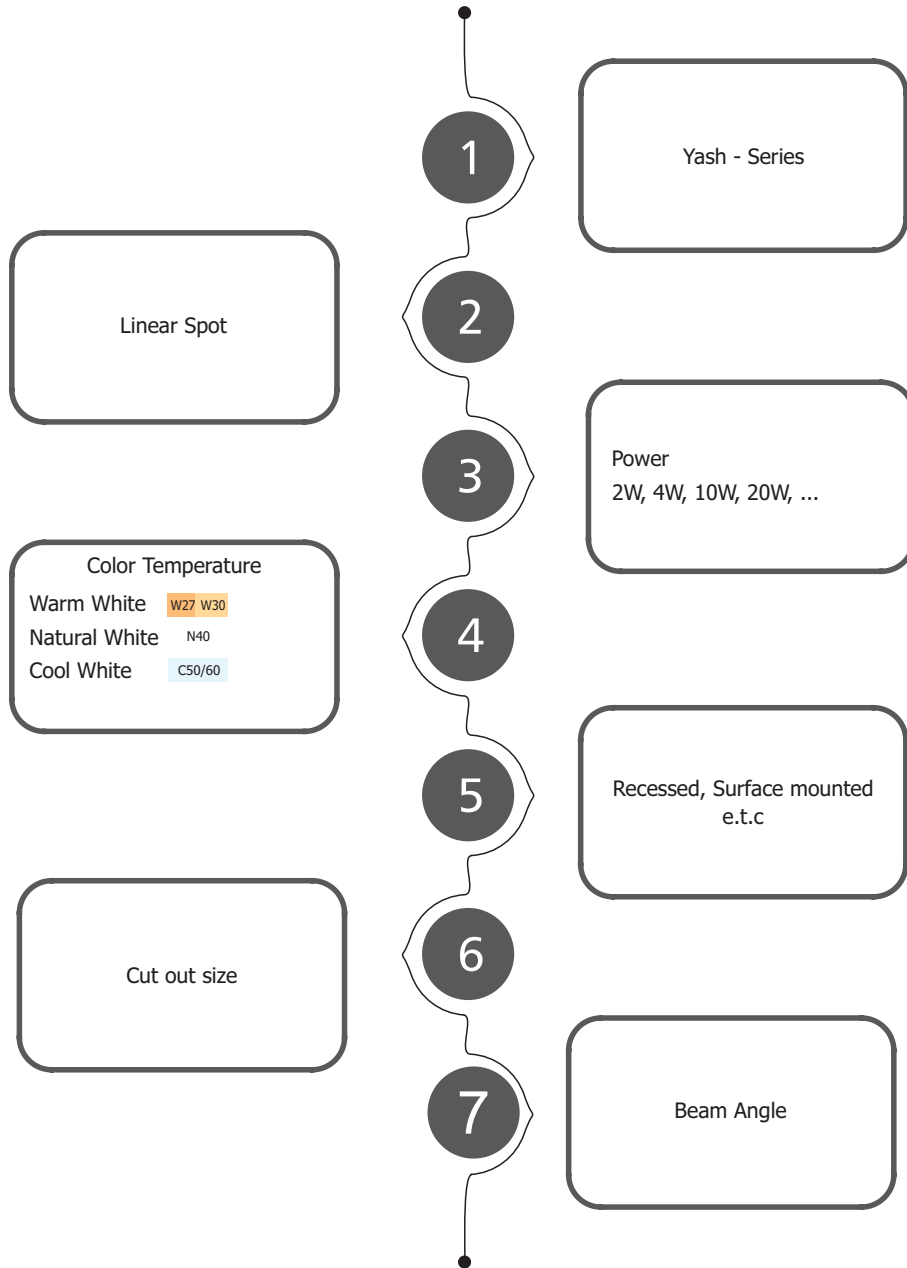
Finish Color :

# LED Linear Spot Lights



# YA-LS-WK-R-CO-D

- 1
- 2
- 3
- 4
- 5
- 6
- 7



GLOSSY  
WHITE



MATT  
BLACK



MATT  
BLACK



GLOSSY  
WHITE



GLOSSY  
GOLDEN



GLOSSY  
BLACK



GLOSSY  
BLACK

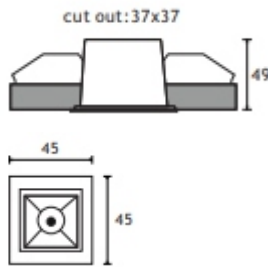


GLOSSY  
ROSE



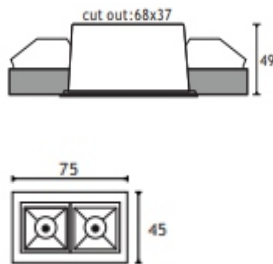
CHROME

## YA-LS-2K-R37-D



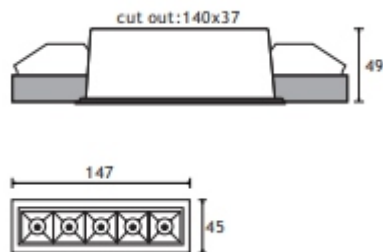
Technical : 2W , OSRAM,  
CRI 80+ | 2700K 3000K 4000K  
140, 145, 150lm | 15°, 30°,45° | IP23  
Dimension: Ø45x45x49mm, co: 37x37  
Driver : Remote Dimmable/ Non Dimmable Driver  
Material : Aluminum  
Surface Color :

## YA-LS-4K-R468-D



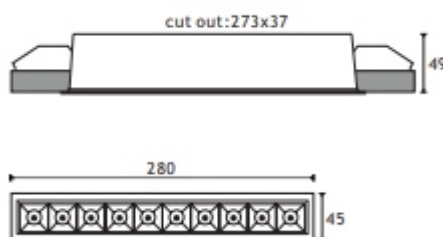
Technical : 4W , OSRAM,  
CRI 80+ | 2700K 3000K 4000K  
280, 290, 300lm | 15°, 30°,45° | IP23  
Dimension: Ø75x45x49mm, co: 68x37  
Driver : Remote Dimmable/ Non Dimmable Driver  
Material : Aluminum  
Surface Color :

## YA-LS-10K-R140-D



Technical : 10W , OSRAM,  
CRI 80+ | 2700K 3000K 4000K  
700, 725, 750lm | 10, 15°, 30°,45° | IP23  
Dimension: Ø147x45x49mm, co: 140x37  
Driver : Remote Dimmable/ Non Dimmable Driver  
Material : Aluminum  
Surface Color :

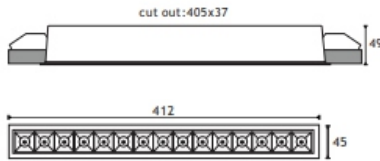
## YA-LS-20K-R273-D



Technical : 20W , OSRAM,  
CRI 80+ | 2700K 3000K 4000K  
1400, 1450, 1500lm | 10, 15°, 30°,45° | IP23 .  
Dimension: Ø280x45x49mm, co: 273x37  
Driver : Remote Dimmable/ Non Dimmable Driver  
Material : Aluminum  
Surface Color :



## YA-LS-30K-R405-D



Technical : 30W , OSRAM,

CRI 80+ | 2700K 3000K 4000K

2100, 2175, 2250lm | 10, 15°, 30°,45° | IP23

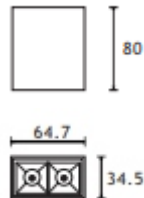
Dimension: Ø412x45x49mm, co: 405x37

Driver : Remote Dimmable/ Non Dimmable Driver

Material : Aluminum

Surface Color :

## YA-LS-4K-S35-D



Technical : 4W , OSRAM,

CRI 80+ | 2700K 3000K 4000K

280, 290, 300lm | 15°, 30°,45° | IP23

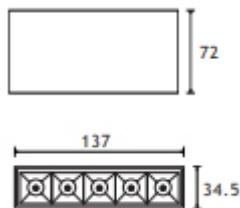
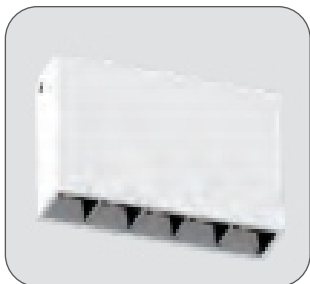
Dimension: Ø64.7x34.5x80mm

Driver : Remote Dimmable/ Non Dimmable Driver

Material : Aluminum

Surface Color :

## YA-LS-10K-S137-D



Technical : 10W , OSRAM,

CRI 80+ | 2700K 3000K 4000K

650, 700,750lm | 10, 15°, 30°,45° | IP23 .

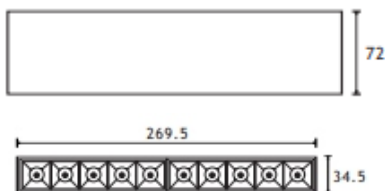
Dimension: Ø137x34.5x72

Driver : Remote Dimmable/ Non Dimmable Driver

Material : Aluminum

Surface Color :

## YA-LS-20K-S270-D



Technical : 20W , OSRAM,

CRI 80+ | 2700K 3000K 4000K

1400, 1450, 1500lm | 10, 15°, 30°,45° | IP23

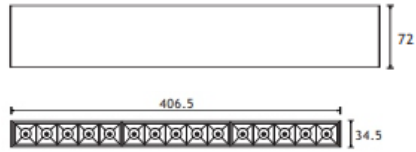
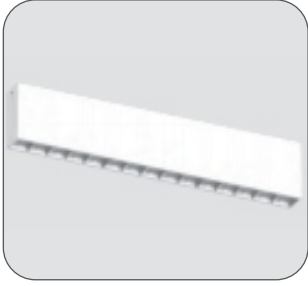
Dimension: Ø269.5x34.5x72mm,

Driver : Remote Dimmable/ Non Dimmable Driver

Material : Aluminum

Surface Color :

## YA-LS-30K-S407-D



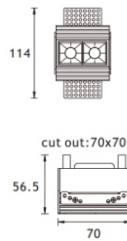
Technical : 30W , OSRAM,  
CRI 80+ | 2700K 3000K 4000K  
2100, 2150, 2250lm | 10, 15°, 30°,45° | IP23 .  
Dimension: Ø406.5x34.5x72mm

Driver : Remote Dimmable/ Non Dimmable Driver

Material : Aluminum

Surface Color :

## YA-LS-4K-TR70-D



Technical : 4W , OSRAM,  
CRI 80+ | 2700K 3000K 4000K  
280, 290, 300lm | 15°, 30°,45° | IP23 .

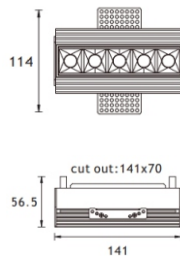
Dimension: Ø70x114x56.5mm, CO: 70x70

Driver : Remote Dimmable/ Non Dimmable Driver

Material : Aluminum

Surface Color :

## YA-LS-10K-TR140-D



Technical : 10W , OSRAM,  
CRI 80+ | 2700K 3000K 4000K  
700,725, 750lm | 10, 15°, 30°,45° | IP23 .

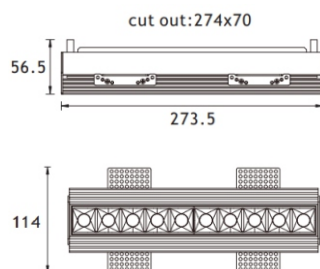
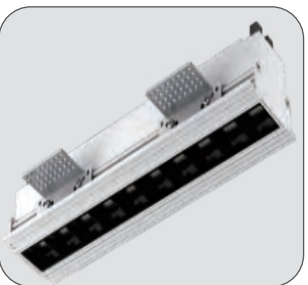
Dimension: Ø141x114x56.5 CO: 141x70

Driver : Remote Dimmable/ Non Dimmable Driver

Material : Aluminum

Surface Color :

## YA-LS-20K-TR274-D



Technical : 20W , OSRAM,  
CRI 80+ | 2700K 3000K 4000K  
1400, 1450, 1500lm | 10, 15°, 30°,45° | IP23 .

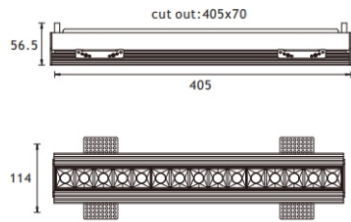
Dimension: Ø274x114x56.5mm,CO: 274x70

Driver : Remote Dimmable/ Non Dimmable Driver

Material : Aluminum

Surface Color :

## YA-LS-30K-TR405-D



Technical : 30W , OSRAM,  
CRI 80+ | 2700K 3000K 4000K  
2100, 2175, 2250lm | 10, 15°, 30°,45° | IP23 .

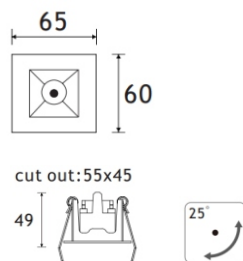
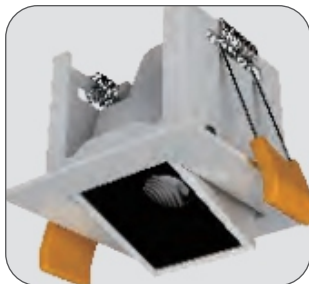
Dimension: Ø405x114x70mm CO: 405X70

Driver : Remote Dimmable/ Non Dimmable Driver

Material : Aluminum

Surface Color :

## YA-LS-2K-RA55-D



Technical : 2W , OSRAM,  
CRI 80+ | 2700K 3000K 4000K  
140, 145, 150lm | 15°, 30°,45° | IP23 .

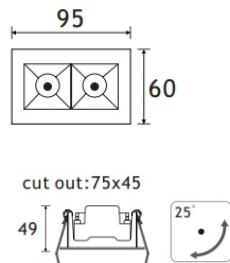
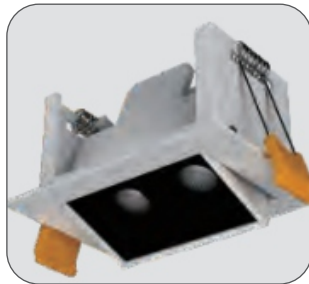
Dimension: Ø65x60x49mm, co: 55x45

Driver : Remote Dimmable/ Non Dimmable Driver

Material : Aluminum

Surface Color :

## YA-LS-4K-RA75-D



Technical : 4W , OSRAM,  
CRI 80+ | 2700K 3000K 4000K  
280, 290, 300lm | 15°, 30°,45° | IP23 .

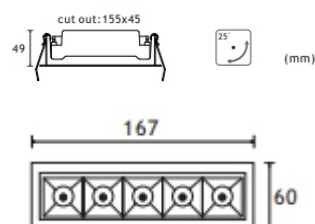
Dimension: Ø95x60x49mm, co: 75x45

Driver : Remote Dimmable/ Non Dimmable Driver

Material : Aluminum

Surface Color :

## YA-LS-10K-RA155-D



Technical : 10W , OSRAM,  
CRI 80+ | 2700K 3000K 4000K  
700, 725, 750lm | 10, 15°, 30°,45° | IP23 .

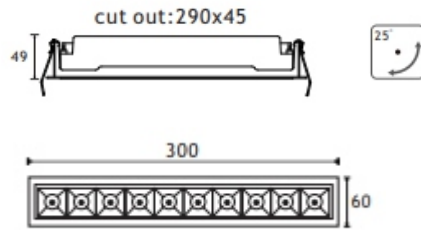
Dimension: Ø167x60x49mm, co: 155x45

Driver : Remote Dimmable/ Non Dimmable Driver

Material : Aluminum

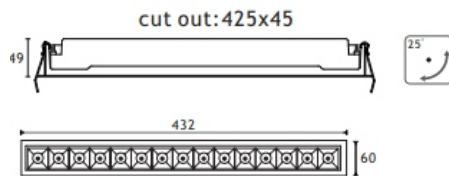
Surface Color :

## YA-LS-20K-RA290-D



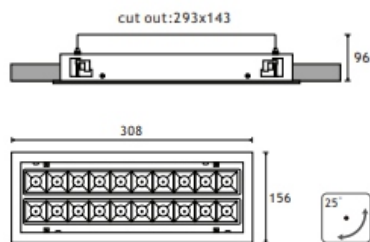
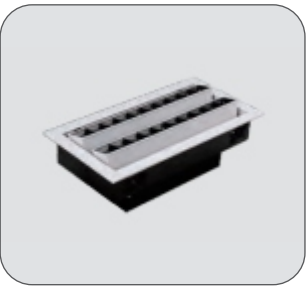
Technical : 20W , OSRAM,  
 CRI 80+ | 2700K 3000K 4000K  
 1400, 1450, 1500lm | 10°, 15°, 30°,45° | IP23 .  
 Dimension: Ø300x60x49mm, co: 290x45  
 Driver : Remote Dimmable/ Non Dimmable Driver  
 Material : Aluminum  
 Surface Color :

## YA-LS-30K-RA425-D



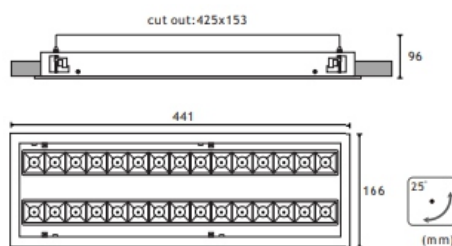
Technical : 30W , OSRAM,  
 CRI 80+ | 2700K 3000K 4000K  
 2100, 2175, 2250lm | 10°, 15°, 30°,45° | IP23 .  
 Dimension: Ø432x60x49mm, co: 425x45  
 Driver : Remote Dimmable/ Non Dimmable Driver  
 Material : Aluminum  
 Surface Color :

## YA-LS-20K-RD308-D



Technical : 20W , OSRAM,  
 CRI 80+ | 2700K 3000K 4000K  
 2800, 2850, 3000lm | 10°, 15°, 30°,45° | IP23 .  
 Dimension: Ø308x156x96mm, co: 293x143  
 Driver : Remote Dimmable/ Non Dimmable Driver  
 Material : Aluminum  
 Surface Color :

## YA-LS-30K-RD425-D



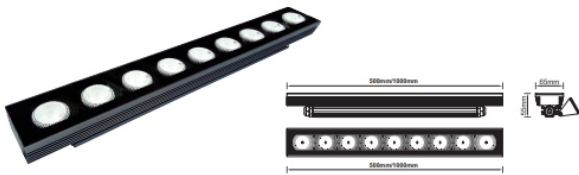
Technical : 2x30W , OSRAM,  
 CRI 80+ | 2700K 3000K 4000K  
 4200, 4250, 4500lm | 10°, 15°, 30°,45° | IP23 .  
 Dimension: Ø441x166x96mm, co: 425x153  
 Driver : Remote Dimmable/ Non Dimmable Driver  
 Material : Aluminum  
 Surface Color :

# LED Wall Washer

---



## YA-WW-24K-IP68



Technical : 24W Cree Chip, 1600LM, 9 LED's  
CRI 80+ | 3000K, 4000K, 6000K  
5°, 8°, 12°, 24°, 36°, 60°, 10x30°, IP68, IK04  
Driver : Dimmable/Non Dimmable Driver  
Material : Aluminum, Tampered glass  
Surface Color : ■■■■■

## YA-WW-48K-IP68



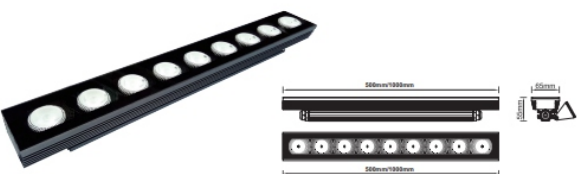
Technical : 48W Cree Chip, 3200LM, 18 LED's  
CRI 80+ | 3000K, 4000K, 6000K  
5°, 8°, 12°, 24°, 36°, 60°, 10x30°, IP68, IK04  
Driver : Dimmable/Non Dimmable Driver  
Material : Aluminum, Tampered glass  
Surface Color : ■■■■■

## YA-WW-18RGBW-IP68



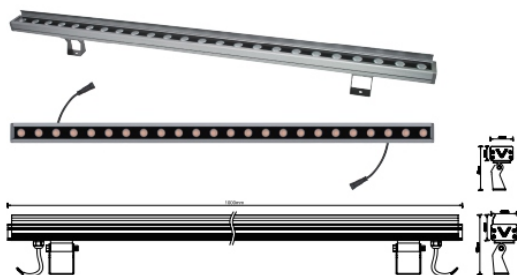
Technical : 18W Cree Chip, 720LM, 9 LED's  
CRI 80+ | RGBW 5500K  
5°, 8°, 12°, 24°, 36°, 60°, 10x30°, IP68, IK04  
Driver : Dimmable/Non Dimmable Driver  
Material : Aluminum, Tampered glass  
Surface Color : ■■■■■

## YA-WW-36RGBW-IP68



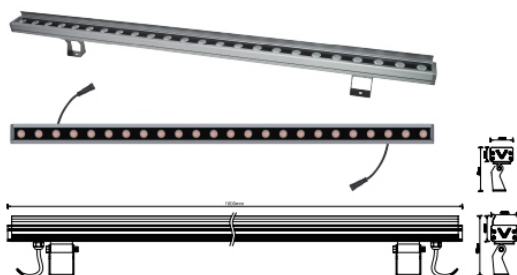
Technical : 36W Cree Chip, 1440LM, 18 LED's  
CRI 80+ | RGBW 5500K  
5°, 8°, 12°, 24°, 36°, 60°, 10x30°, IP68, IK04  
Driver : Dimmable/Non Dimmable Driver  
Material : Aluminum, Tampered glass  
Surface Color : ■■■■■

## YA-WW-18K-IP65



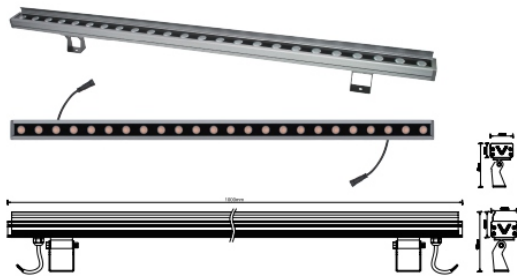
Technical : 18W Osram, 1440LM, 24LED's  
CRI 80+ | 2700K, 3000K, 4500K, 6000K  
12°, 24°, 30°, 40°, 60°, 10x30°, 15x40°, IP65, IK04  
Driver : Dimmable/Non Dimmable Driver  
Material : Aluminum, Tampered glass  
Surface Color : ■■■■

## YA-WW-24K-IP65



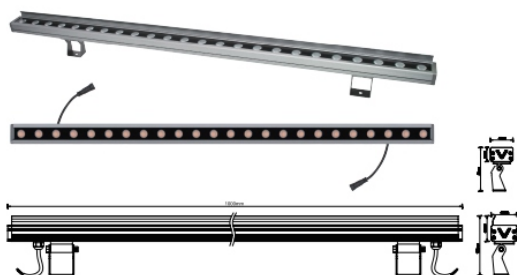
Technical : 24W Osram, 1800LM, 24LED's  
CRI 80+ | 2700K, 3000K, 4500K, 6000K  
12°, 24°, 30°, 40°, 60°, 10x30°, 15x40°, IP65, IK04  
Driver : Dimmable/Non Dimmable Driver  
Material : Aluminum, Tampered glass  
Surface Color : ■■■■

## YA-WW-36K-IP65

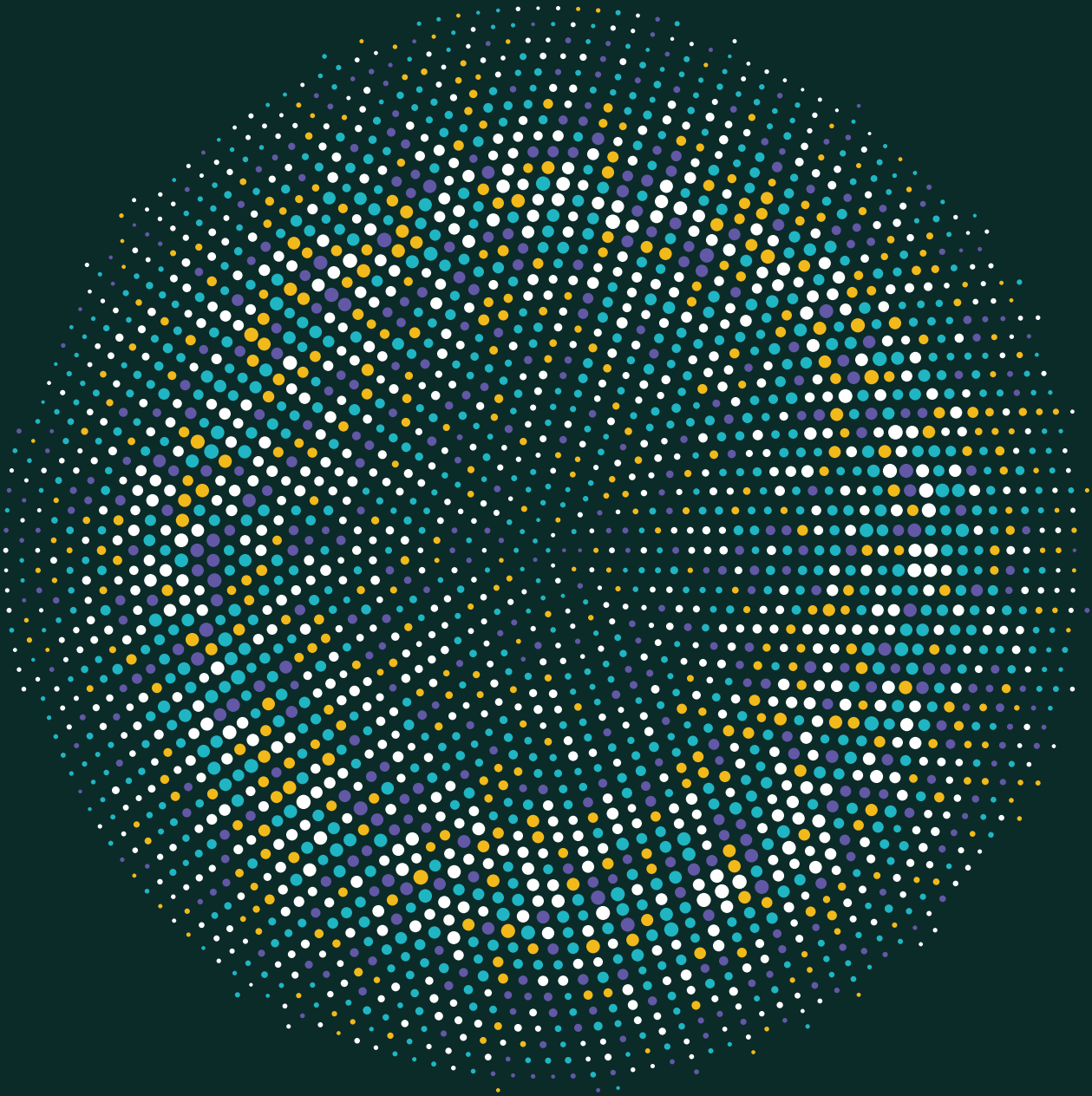


Technical : 36W Osram, 2700LM, 36LED's  
CRI 80+ | 2700K, 3000K, 4500K, 6000K  
12°, 24°, 30°, 40°, 60°, 10x30°, 15x40°, IP65, IK04  
Driver : Dimmable/Non Dimmable Driver  
Material : Aluminum, Tampered glass  
Surface Color : ■■■■

## YA-WW-48K-IP65



Technical : 48W Osram, 3200LM, 36LED's  
CRI 80+ | 2700K, 3000K, 4500K, 6000K  
12°, 24°, 30°, 40°, 60°, 10x30°, 15x40°, IP65, IK04  
Driver : Dimmable/Non Dimmable Driver  
Material : Aluminum, Tampered glass  
Surface Color : ■■■■



## EN POWER

EN POWER ELECTRONICS L.L.C.

P.O.Box 126081, Dubai, United Arab Emirates

+9714 3977274, +9715 55885231

Fax : +9714 3977275

info@enpower.ae /info@ledray.net  
www.ledray.net